



# Eclipse Weather Briefing

**National Weather Service  
Little Rock, Arkansas**

**April 1, 2024  
10:30 AM CDT**



## Latest Eclipse Weather Talking Points:

### An unsettled pattern is developing around/on Eclipse Day

- A large storm system will be over the southwest United States during the day of the eclipse.
- Ahead of the system, a south to southwest flow will bring increasing moisture and the possibility of clouds/chances of showers throughout the path of totality in Arkansas.
- Important to Remember: Despite vast improvements of weather models in recent years, any information over more than a few days of a specific time is subject to change. Forecast details will be fine tuned as additional data is received up to the time of the eclipse.



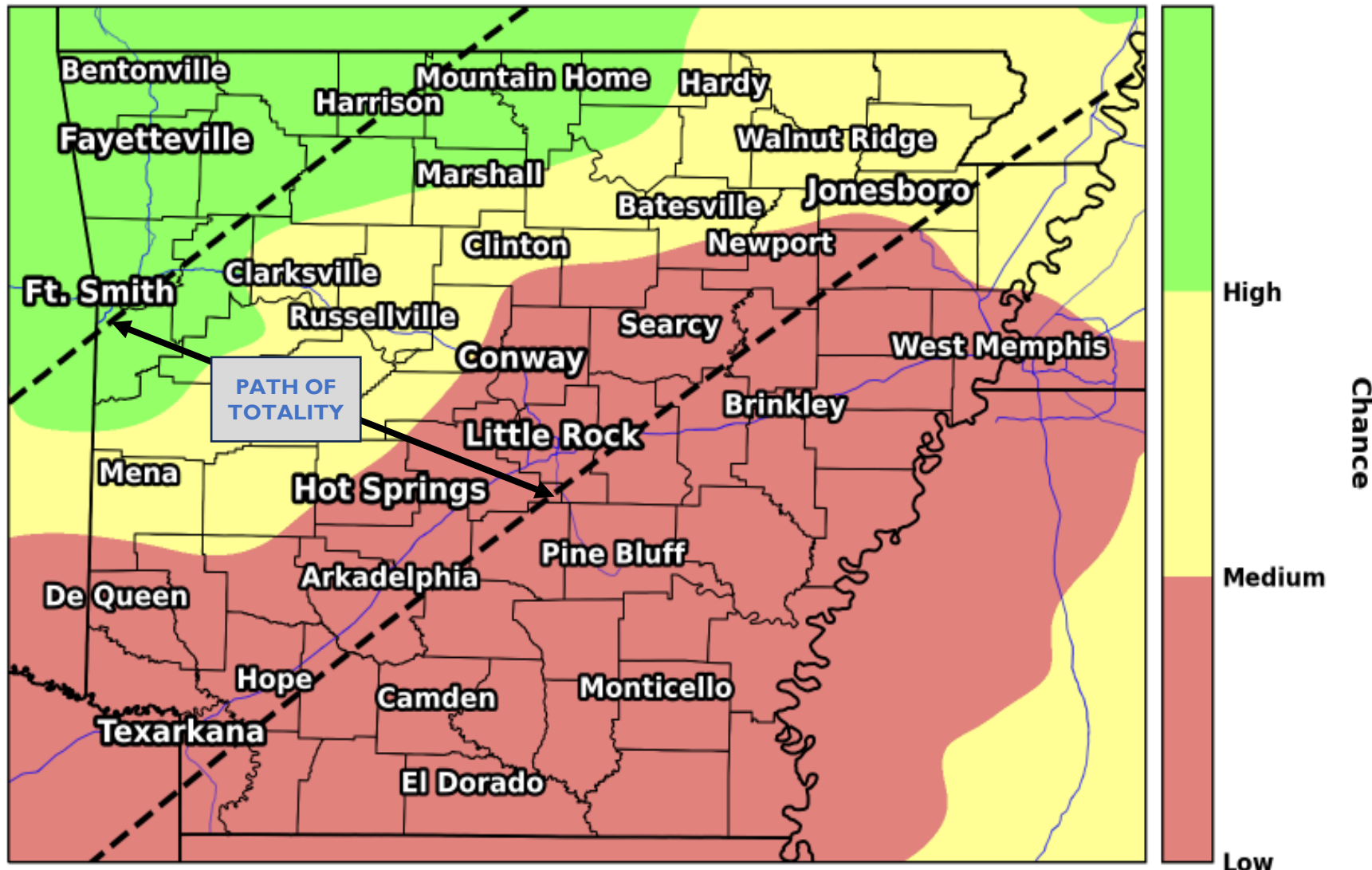
# Eclipse Weather: Arkansas Perspective

The chance of 50% sky coverage or less near the time of totality

## Chance of Favorable Eclipse Viewing Conditions

From NBM Initialized on 04/01/2024 12Z

Hour: 174 Valid: 04/08/2024 18Z



The latest data suggests that parts of Arkansas (mainly central and southern sections of the state) will have a low to medium chance of favorable eclipse viewing conditions.

A small section of northern Arkansas will have a medium to high chance of favorable eclipse viewing conditions.

The region of favorable viewing conditions of the eclipse is indicated by the green shading within the dashed lines which represent the path of totality.



# Eclipse Weather: Regional Perspective

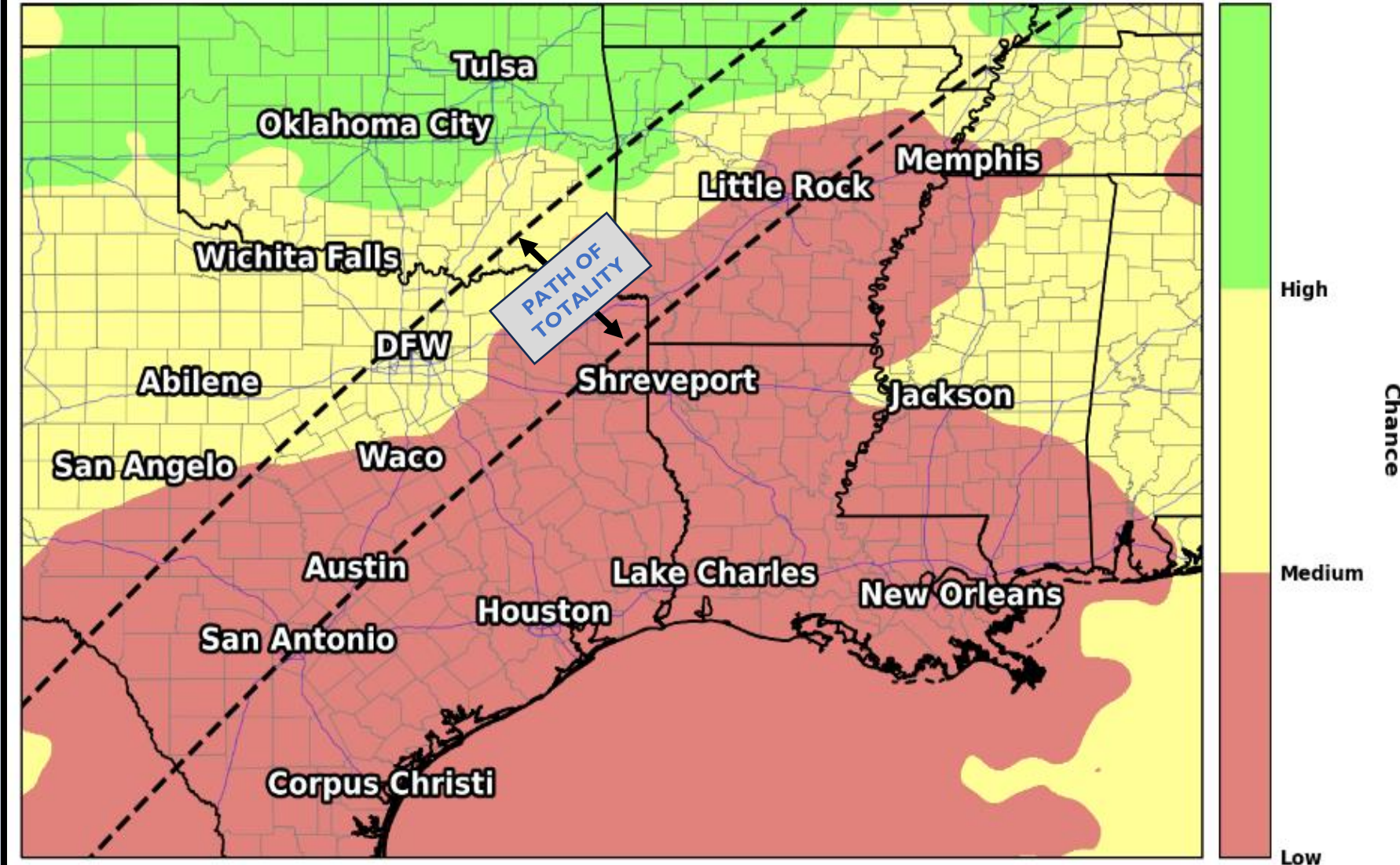


The chance of 50% sky coverage or less near the time of totality

## Chance of Favorable Eclipse Viewing Conditions

From NBM Initialized on 04/01/2024 12Z

Hour: 174 Valid: 04/08/2024 18Z



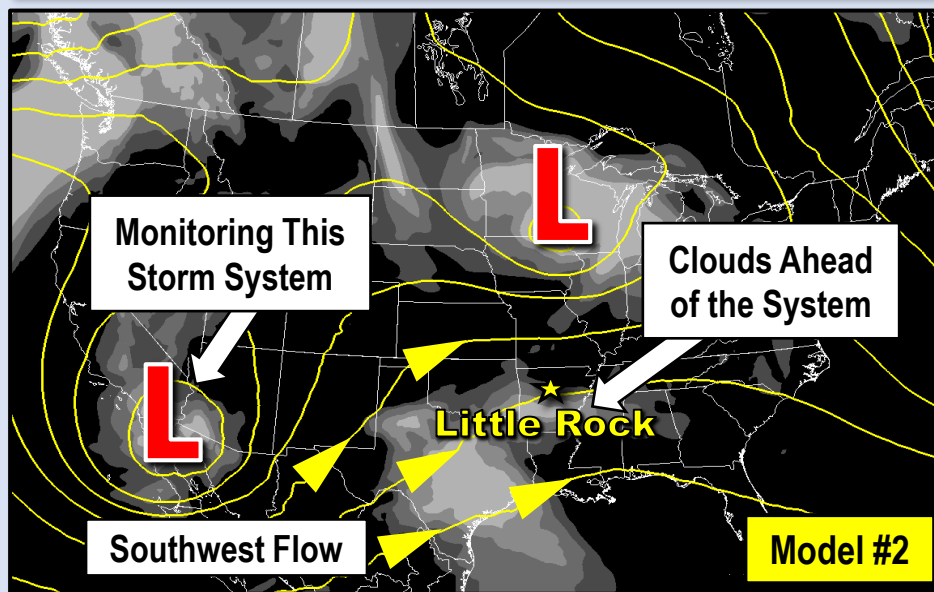
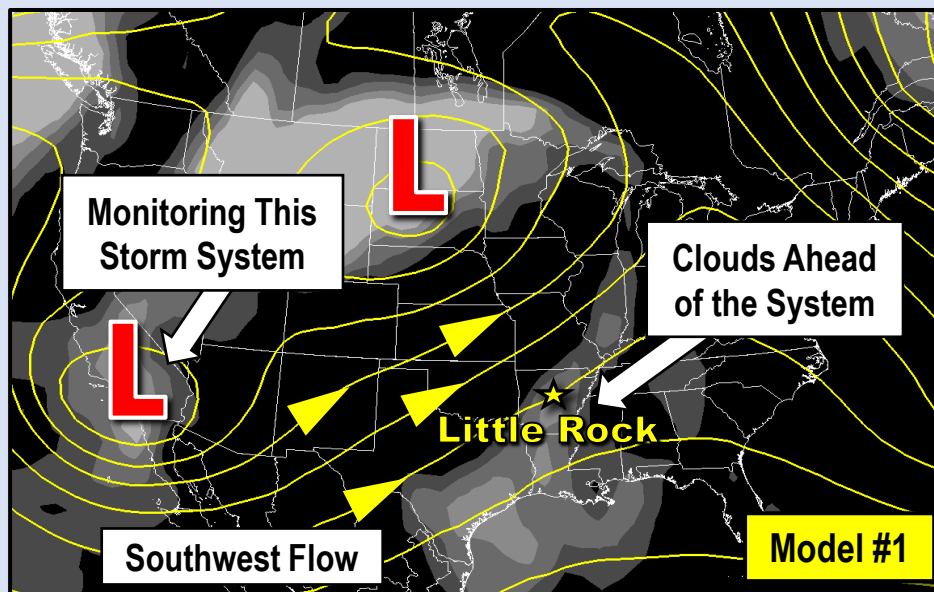
Regionally, along the path of totality, the latest data suggests that eclipse viewing conditions are most favorable the farther north you go, including parts of southeast Oklahoma and areas of northern/western Arkansas.

The least favorable viewing conditions are farther south from central and northeast Texas into central and southwest Arkansas.

# Eclipse Weather: The Forecast Pattern

April 8, 2024

Weather Forecast Office  
Little Rock, AR



Models are showing a large storm system (“L”) over the southwest United States. South to southwest flow ahead of the system will bring increasing moisture into the southern Plains and parts of the mid-South. This will result in at least the potential of clouds and maybe chances of showers.

Please note this is a week away, and a lot could happen between now and the day in question (i.e. system placement, timing, moisture/clouds).

The main takeaway is there is still some uncertainty in determining cloud cover across the path of totality. Stay tuned.



# Eclipse Safety: Total Solar Eclipse Timeline

Weather Forecast Office  
Little Rock, AR



The progression of the Total Solar Eclipse and when a solar filter/eclipse glasses are a MUST

## Solar Eclipse Safety



Partial Eclipse use filter      Total Eclipse filter not needed      Partial Eclipse use filter

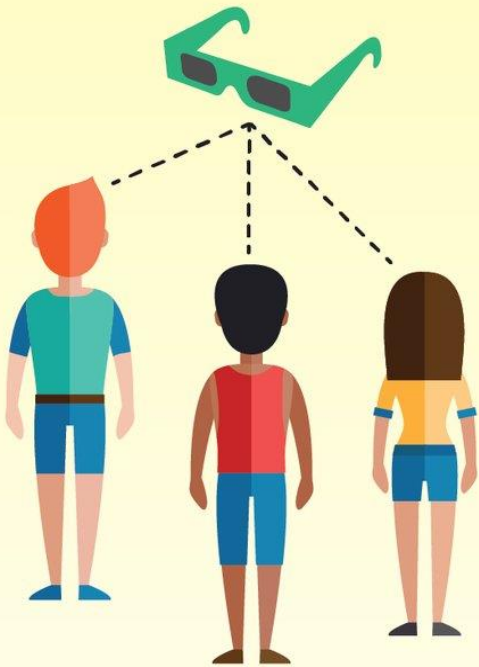
**The sun is dangerously bright and must be viewed through solar filters.**



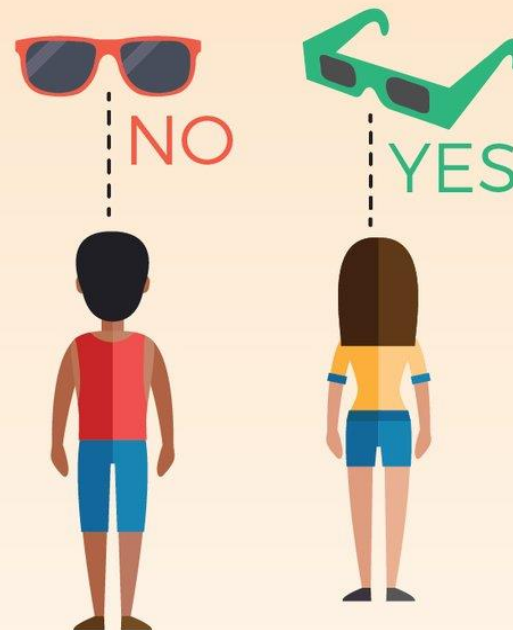
It's NEVER okay to look at the Sun during the Partial Eclipse without eye protection

## Protecting Your Eyes

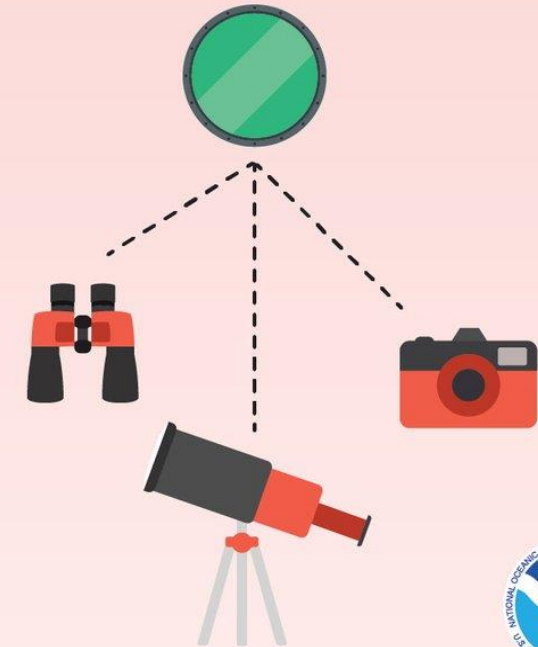
The only safe way to look directly at the sun is through special-purpose solar filters, such as **eclipse glasses**.



Ordinary **sunglasses AREN'T ENOUGH** to protect your eyes, DO NOT wear sunglasses to view the eclipse.



DO NOT look at the sun through a camera, telescope or binoculars unless these **devices have a solar filter** -- your eclipse glasses ARE NOT sufficient.





# For the latest information



**Web:** <http://weather.gov/LZK>



**Phone:** (501) 834-0308



**E-mail:** [sr-lzk.forecasters@noaa.gov](mailto:sr-lzk.forecasters@noaa.gov)



**Facebook:** NWSLittleRock



**Twitter:** @NWSLittleRock



**YouTube:** NWSLittleRock