



# **Severe Weather Briefing**

**National Weather Service  
Little Rock, Arkansas**

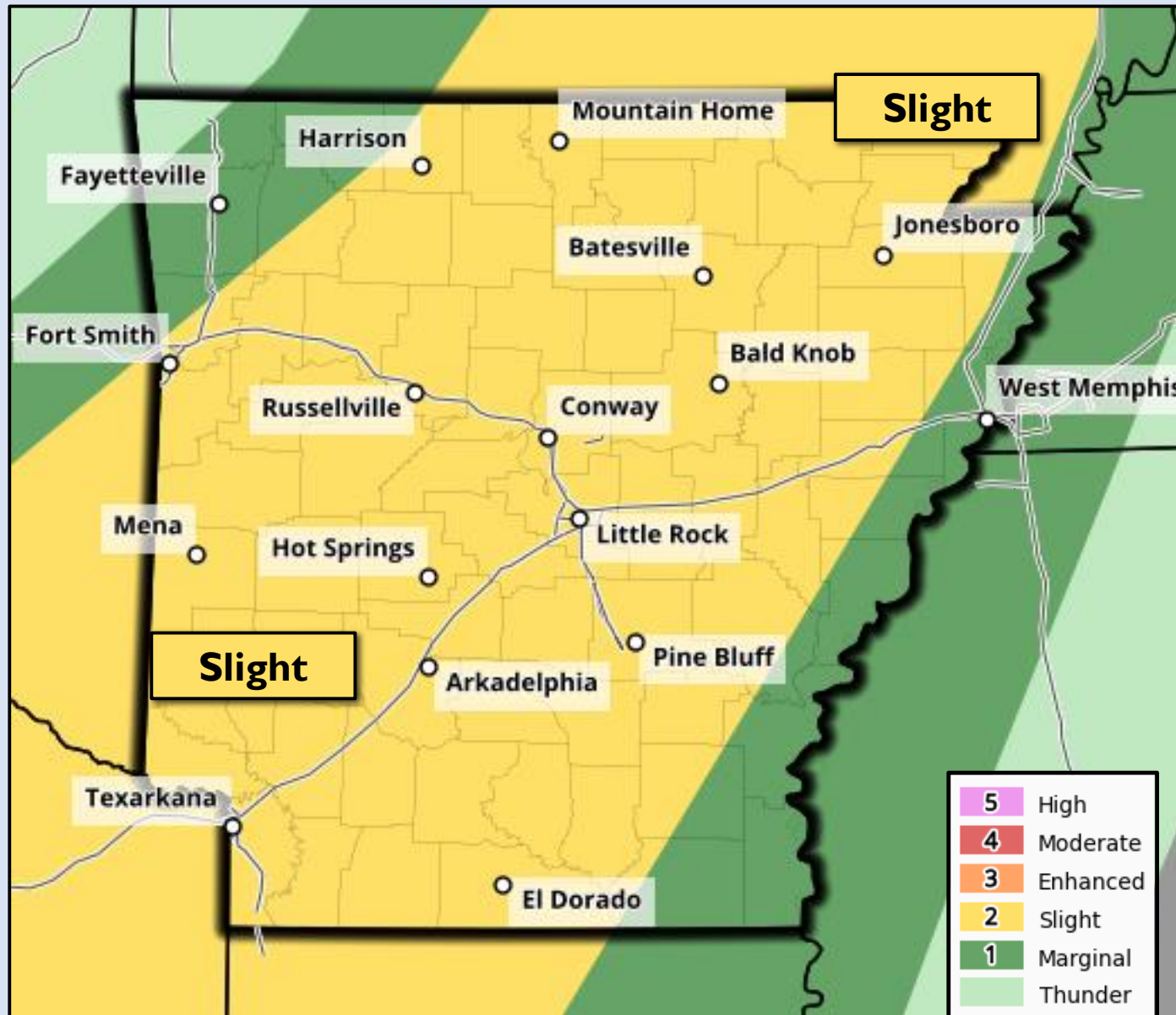
**April 20, 2023 – 5:00 AM**



- **A cold front will sweep across Arkansas Thursday and Friday.**
- **Showers and storms will develop along and ahead of the front, with potential for strong to severe storms to develop.**
- **The primary hazards with these storms will be large hail, damaging winds, with heavy rain and localized flash flooding.**
- **The timing of the development of storms on Thursday will begin early this afternoon across west/northwest AR, with storms continuing to develop along and ahead of the front as it advances east/southeast through early Friday. Rainfall looks to persist through Friday evening across central, south, and eastern portions of the state.**

# Severe Weather Outlook (April 20)

Weather Forecast Office  
Little Rock, AR



## Maximum Hail Size

Up to Softball

Up to Baseball

Up to Golf ball

Up to Quarter

## Maximum Wind Speed

80+ mph

60-80 mph

Up to 60 mph

## Tornado Potential

High

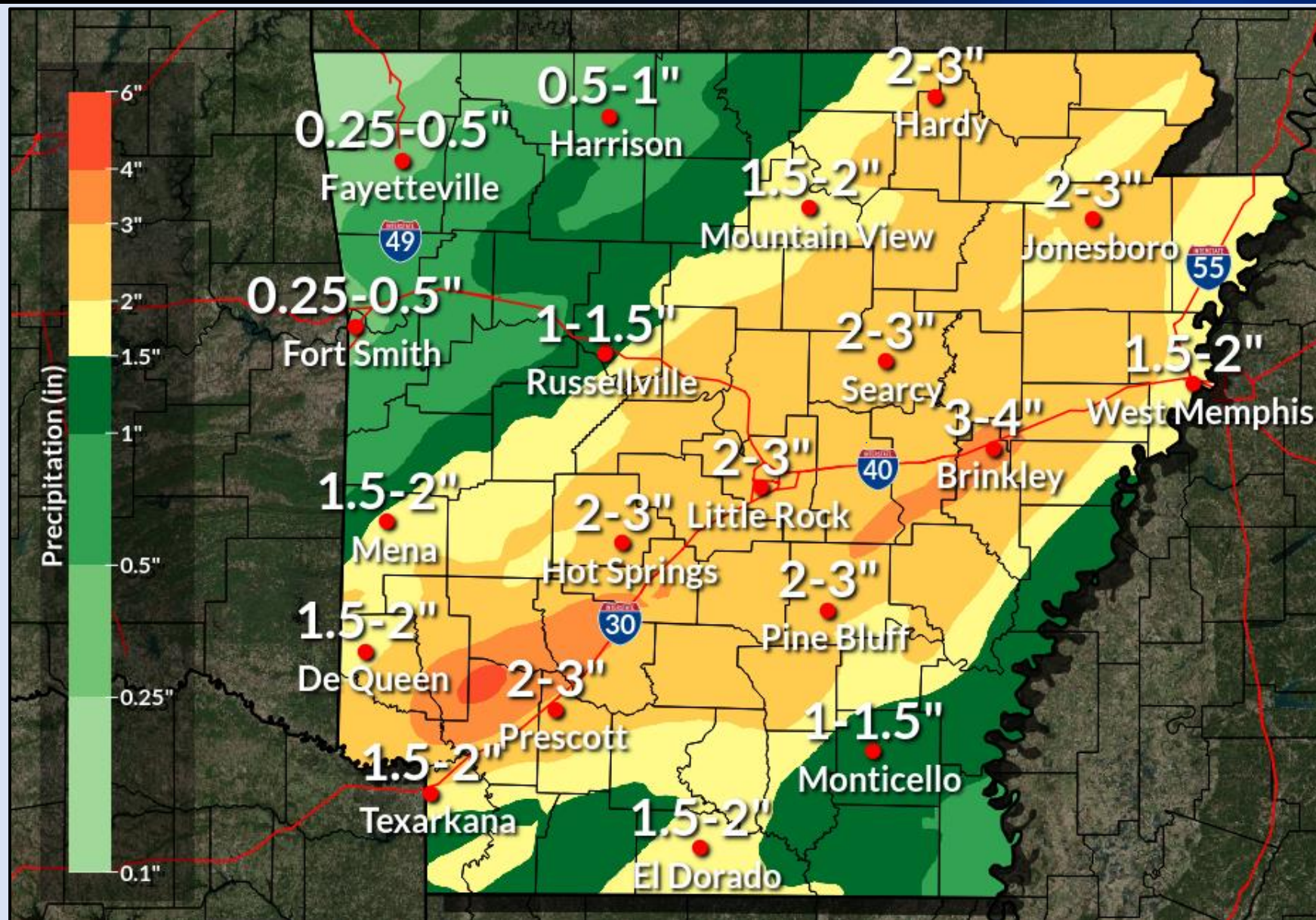
Medium

Low

Very Low

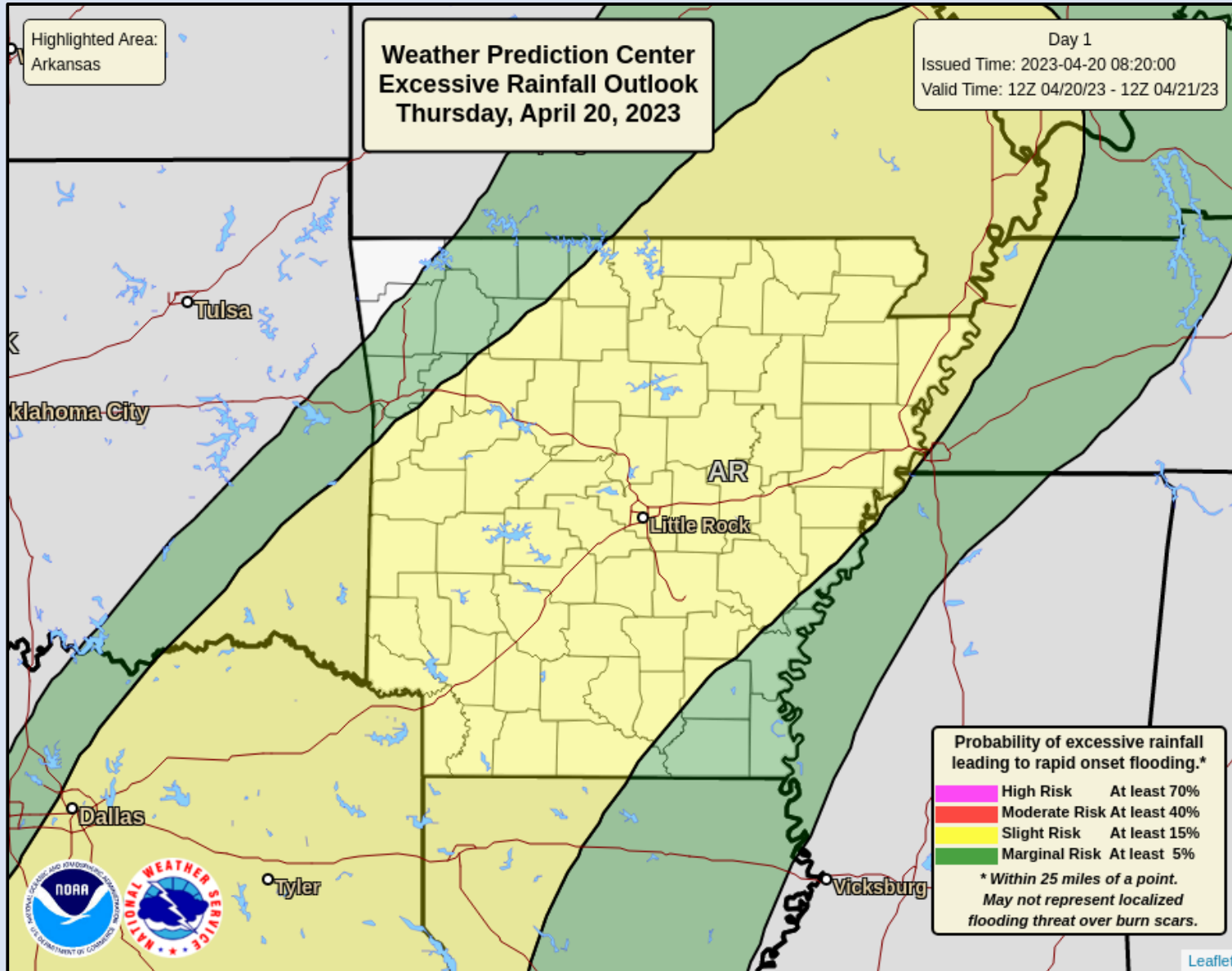
- Strong to severe thunderstorms are possible across Arkansas between late morning Thursday through early morning Friday.
- Large hail and damaging winds will be the main hazards, with the possibility for localized flash flooding.

# Forecast Rainfall (April 20 - 22)



- Periods heavy rain will be possible with strong to severe storms Thursday through Thursday night.
- Additional rainfall is expected through Friday evening across central, east, and southern portions of the state, increasing the risk for localized flash flooding.

# Excessive Rainfall Outlook (April 20)



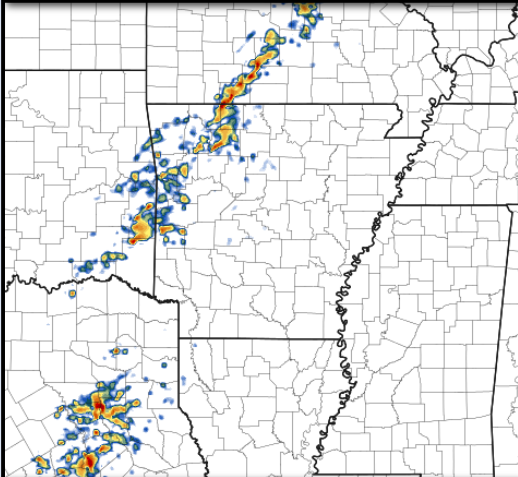
A slight risk for excessive rainfall is forecast across much of the state Thursday, due to an elevated threat for locally heavy rain and flash flooding.

# Potential Storm Timing

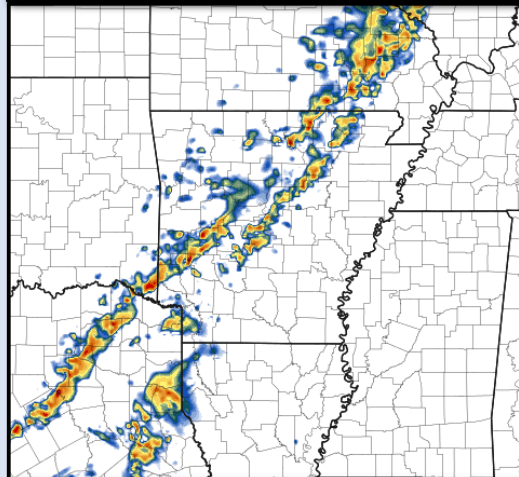
Weather Forecast Office  
Little Rock, AR



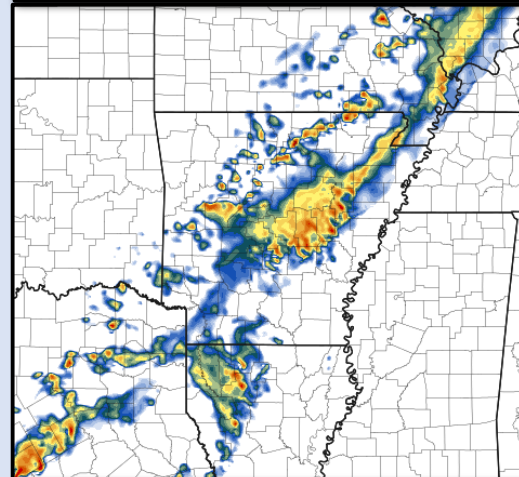
**3 PM Thursday**



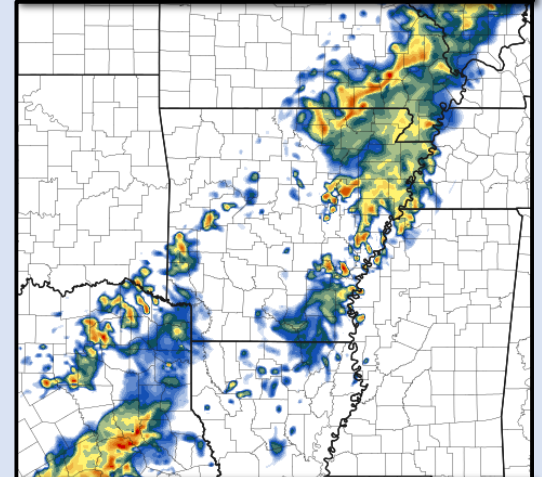
**6 PM Thursday**



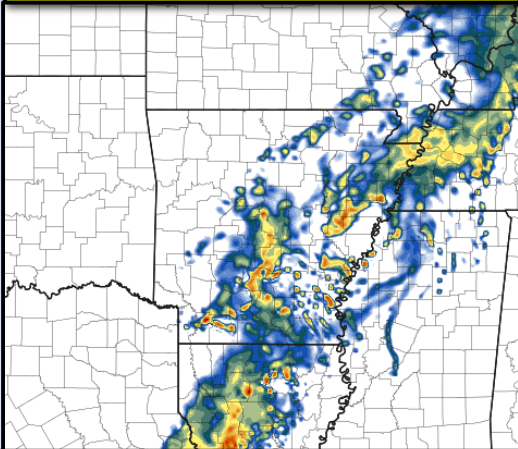
**9 PM Thursday**



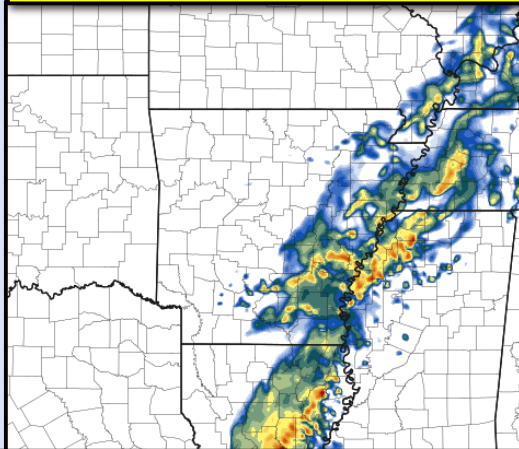
**Midnight Friday**



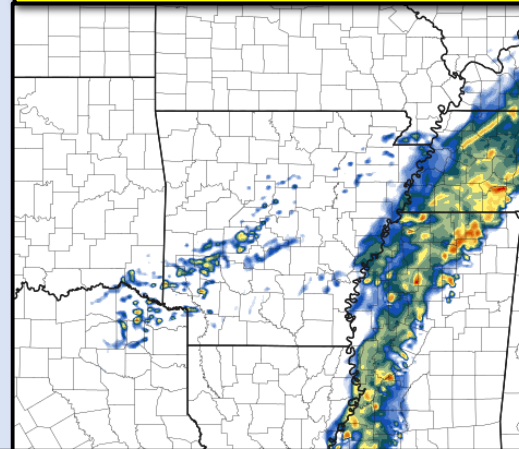
**3 AM Friday**



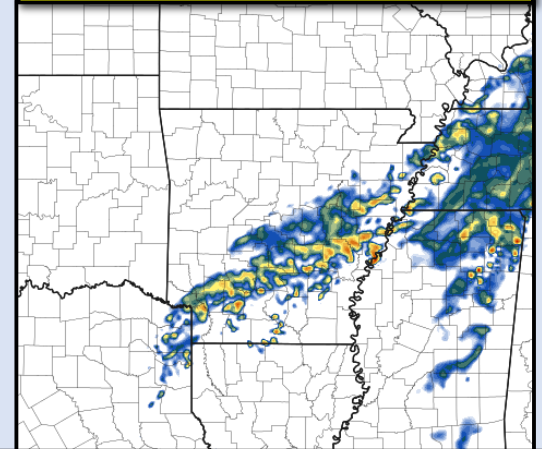
**6 AM Friday**



**9 AM Friday**



**Noon Friday**



*This is a single model run, and is provided to generalize potential storm timing and evolution.  
Images courtesy of Pivotal Weather.*



## Severe Thunderstorm Risk Categories

Thunderstorms (no label)

**No severe storms expected**

Lightning/flooding threats exist with all storms



Enhanced (ENH)

**Numerous severe storms possible**

More persistent and/or widespread, a few intense

Marginal (MRGL)

**Isolated severe storms possible**

Limited in duration and/or coverage and/or intensity



Moderate (MDT)

**Widespread severe storms likely**

Long-lived, widespread and intense

Slight (SLGT)

**Scattered severe storms possible**

Short-lived and/or not widespread, isolated intense storms



High (HIGH)

**Widespread severe storms expected**

Long-lived, very widespread and particularly intense



NWS defines a severe thunderstorm as measured wind gusts of at least 58 mph, and/or hail of at least one inch in diameter, and/or a tornado. All thunderstorm categories imply lightning and the potential for flooding. Categories are also tied to the probability of a severe weather event within 25 miles of your location.



# For the latest information



**Web:** <http://weather.gov/LZK>



**Phone:** (501) 834-0308



**E-mail:** [sr-lzk.forecasters@noaa.gov](mailto:sr-lzk.forecasters@noaa.gov)



**Facebook:** NWSLittleRock



**Twitter:** @NWSLittleRock



**YouTube:** NWSLittleRock