



# **Hazardous Weather Briefing**

**National Weather Service  
Little Rock, Arkansas**

**May 8, 2024  
5:30 AM CDT**



- **Severe storms are expected to fire across Arkansas this afternoon into the overnight hours.**
- **Chances for severe weather will increase through the day as a storm system tracks from the southern Plains to the mid-Mississippi Valley, and drags a cold front into Arkansas. Ahead of the front, well above average temperatures and humid conditions will create a very unstable environment.**
- **All modes of severe weather are in play this afternoon and overnight. Very large hail up to baseball size and wind gusts up to 80 mph are the main threats, with tornadoes also possible. Heavy downpours may lead to localized flash flooding as well.**
- **On Thursday, storms will be mostly south of Arkansas but could impact far southern portions of the state. Damaging winds and large hail would be the main hazards.**

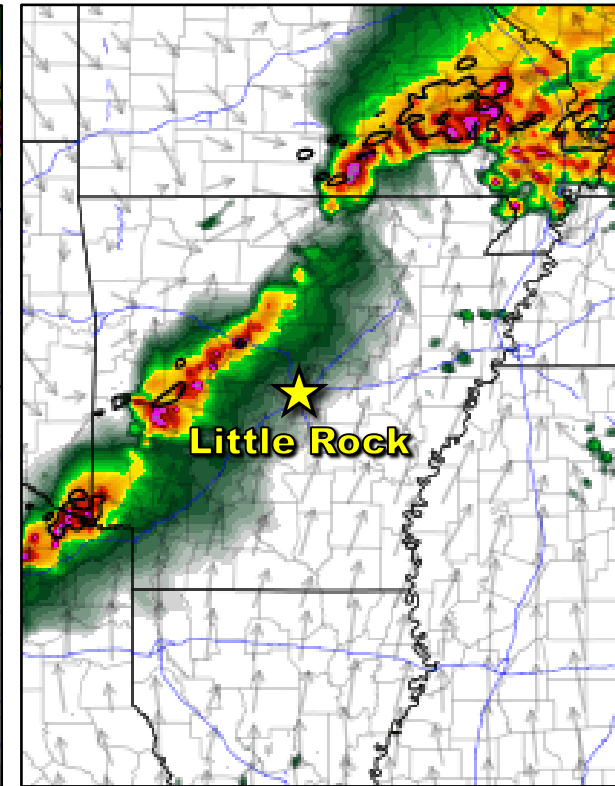
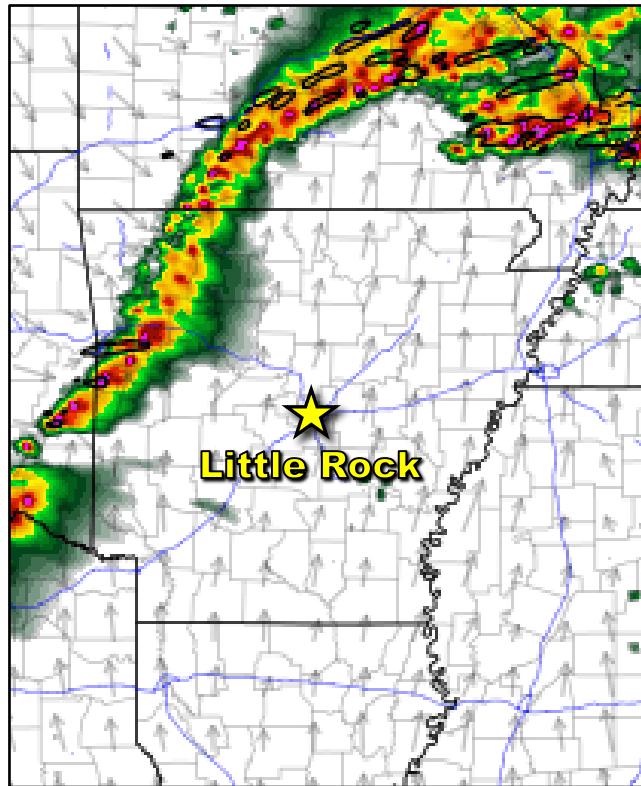
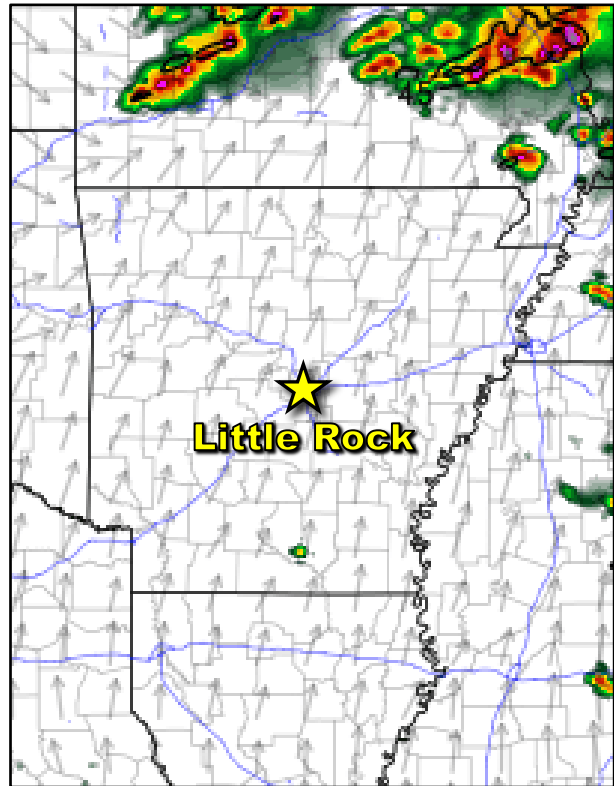
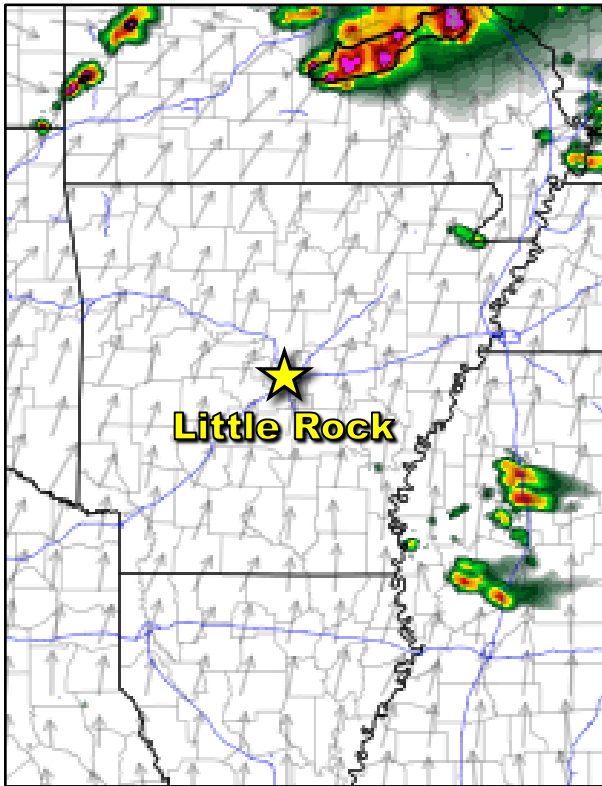


4 PM CDT Wednesday

6 PM CDT Wednesday

8 PM CDT Wednesday

10 PM CDT Wednesday

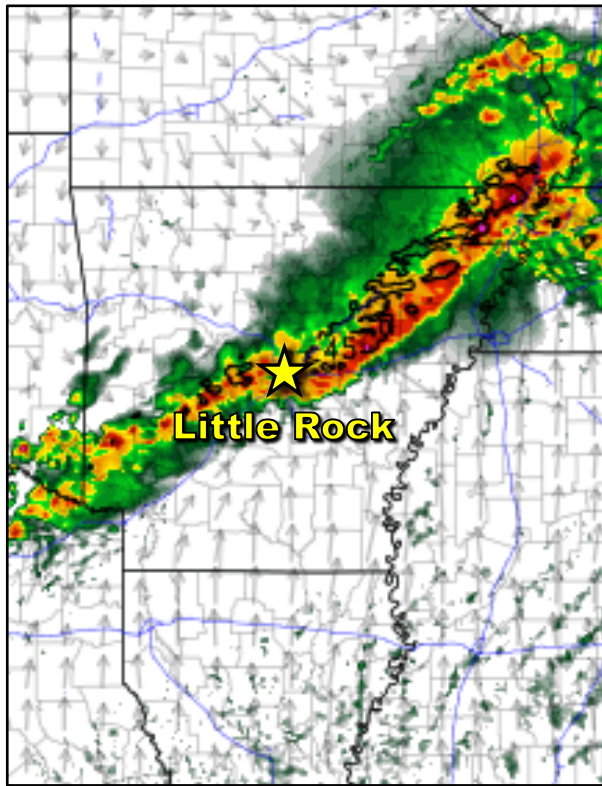


Storms are expected to initially develop by early evening across northern and western Arkansas. These storms will be capable of all severe weather hazards. The storms will gradually shift eastward through the evening hours with the very large hail threat becoming slightly lower. The damaging wind and isolated tornado threat will persist. Activity should make it east of the Mississippi River by daybreak Thursday.

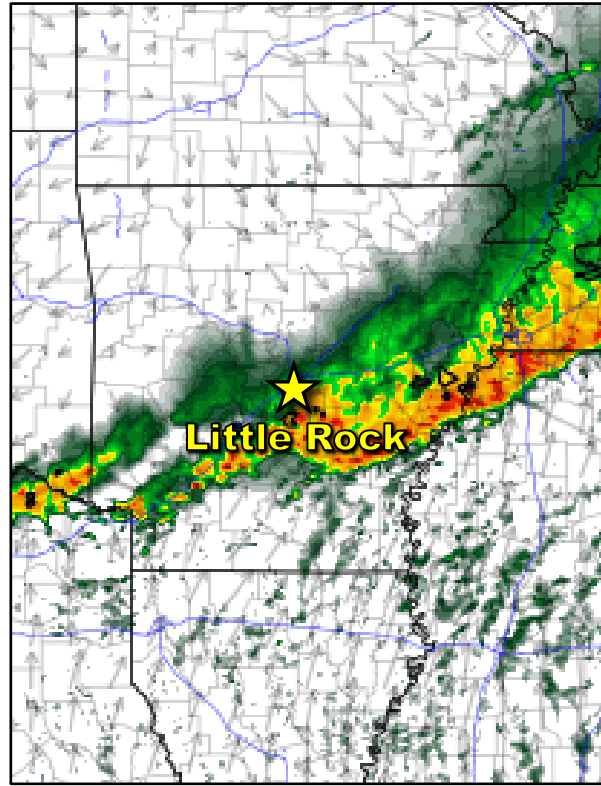
Data Courtesy  
of the  
College of  
DuPage



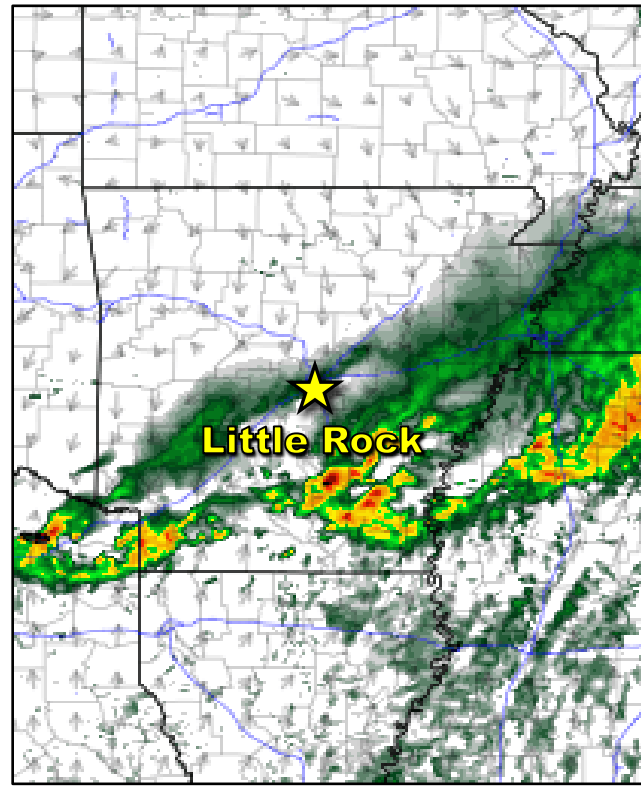
12 AM CDT Thursday



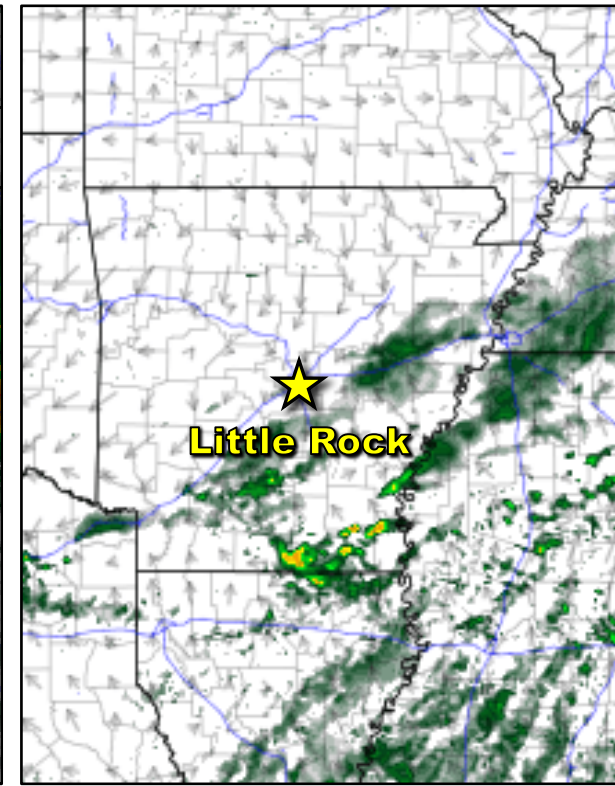
2 AM CDT Thursday



4 AM CDT Thursday

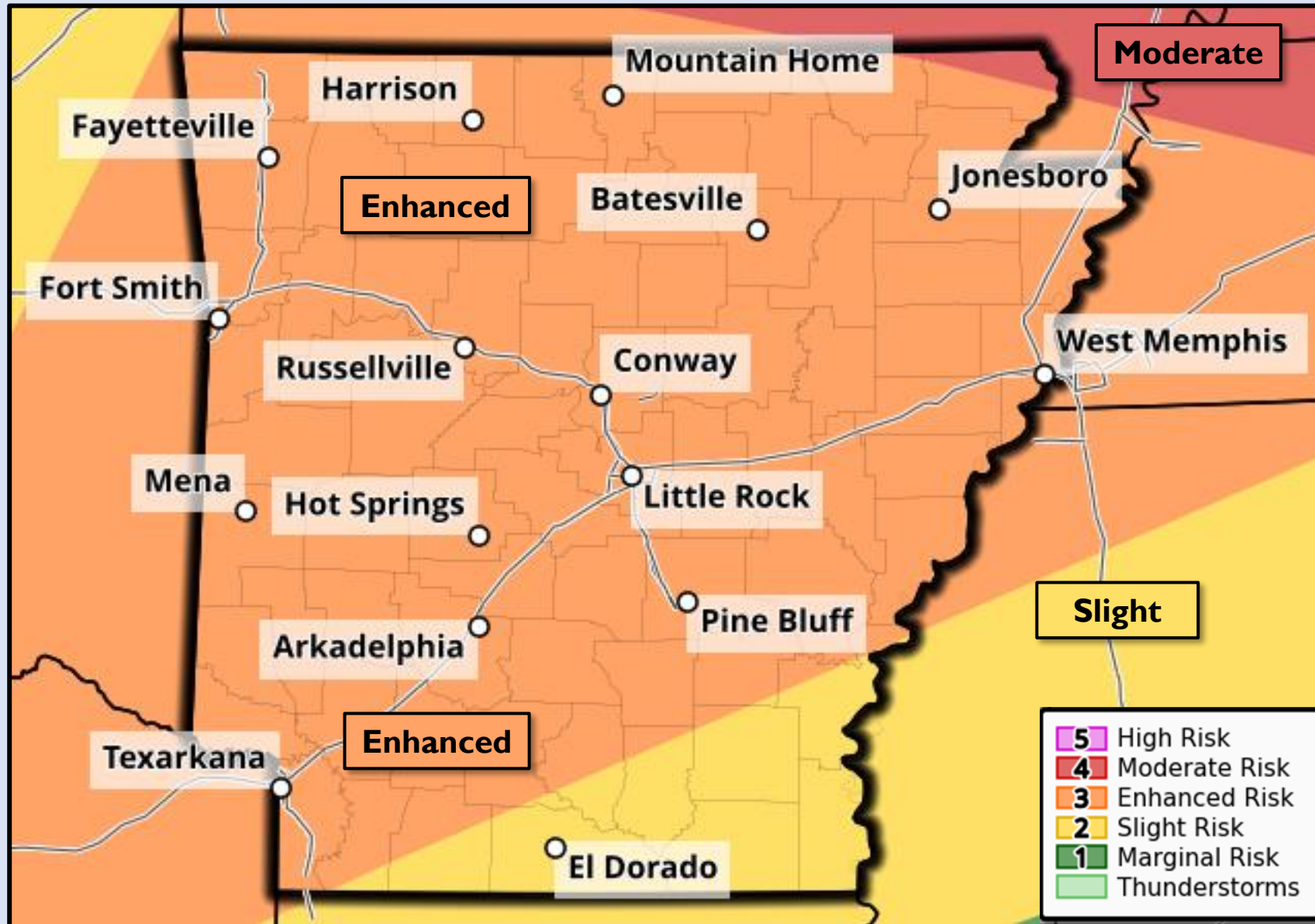


6 AM CDT Thursday



Storms are expected to initially develop by early evening across northern and western Arkansas. These storms will be capable of all severe weather hazards. The storms will gradually shift eastward through the evening hours with the very large hail threat becoming slightly lower. The damaging wind and isolated tornado threat will persist. Activity should make it east of the Mississippi River by daybreak Thursday.

Data Courtesy  
of the  
College of  
DuPage



### Tornado Potential

High
Medium
Low
Very Low

### Maximum Hail Size

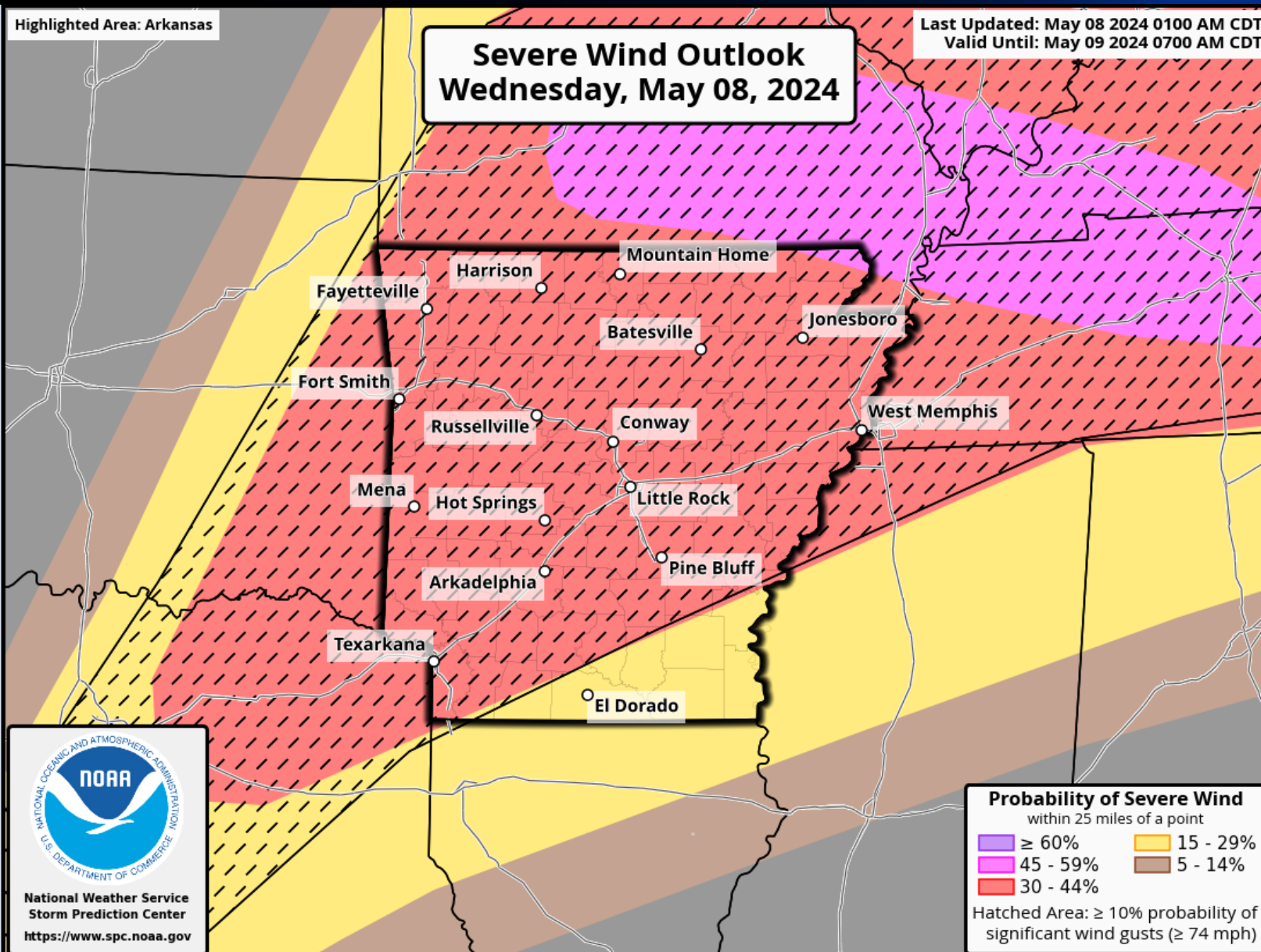
Up to Softball
Up to Baseball
Up to Golf ball
Up to Quarter

### Maximum Wind Speed

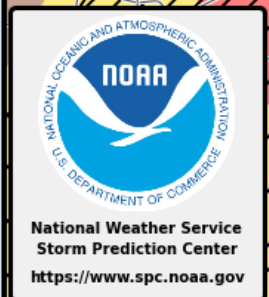
80+ mph
60 to 80 mph
Up to 60 mph

- 5 High Risk
- 4 Moderate Risk
- 3 Enhanced Risk
- 2 Slight Risk
- 1 Marginal Risk
- Thunderstorms

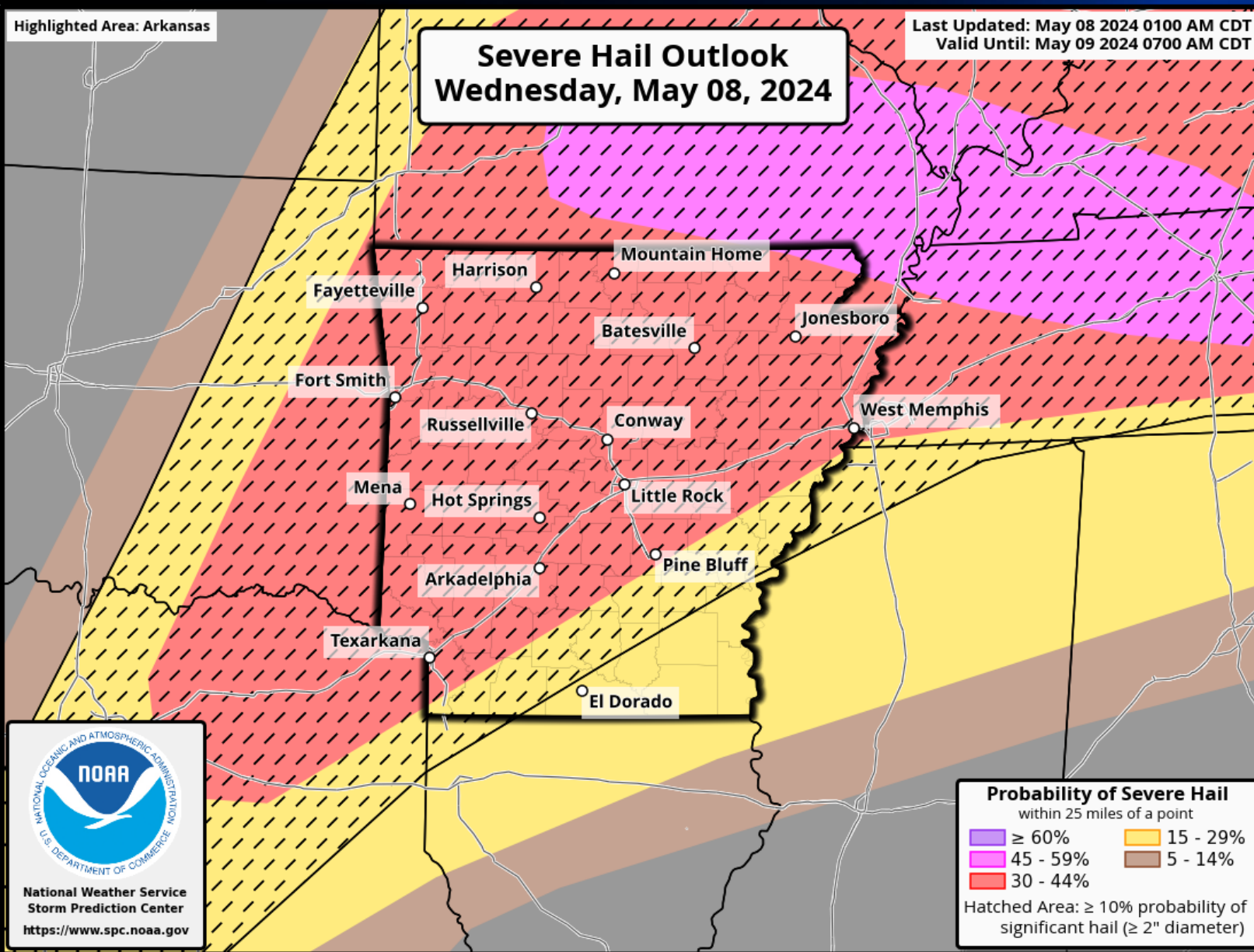
# Severe Weather by Hazard: Severe Wind (May 8, 2024)



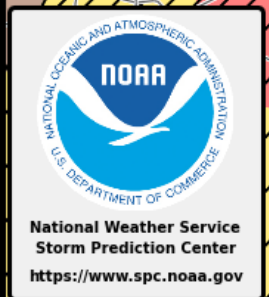
The damaging wind threat will be in place from the time storms develop until they depart the state early Thursday morning.



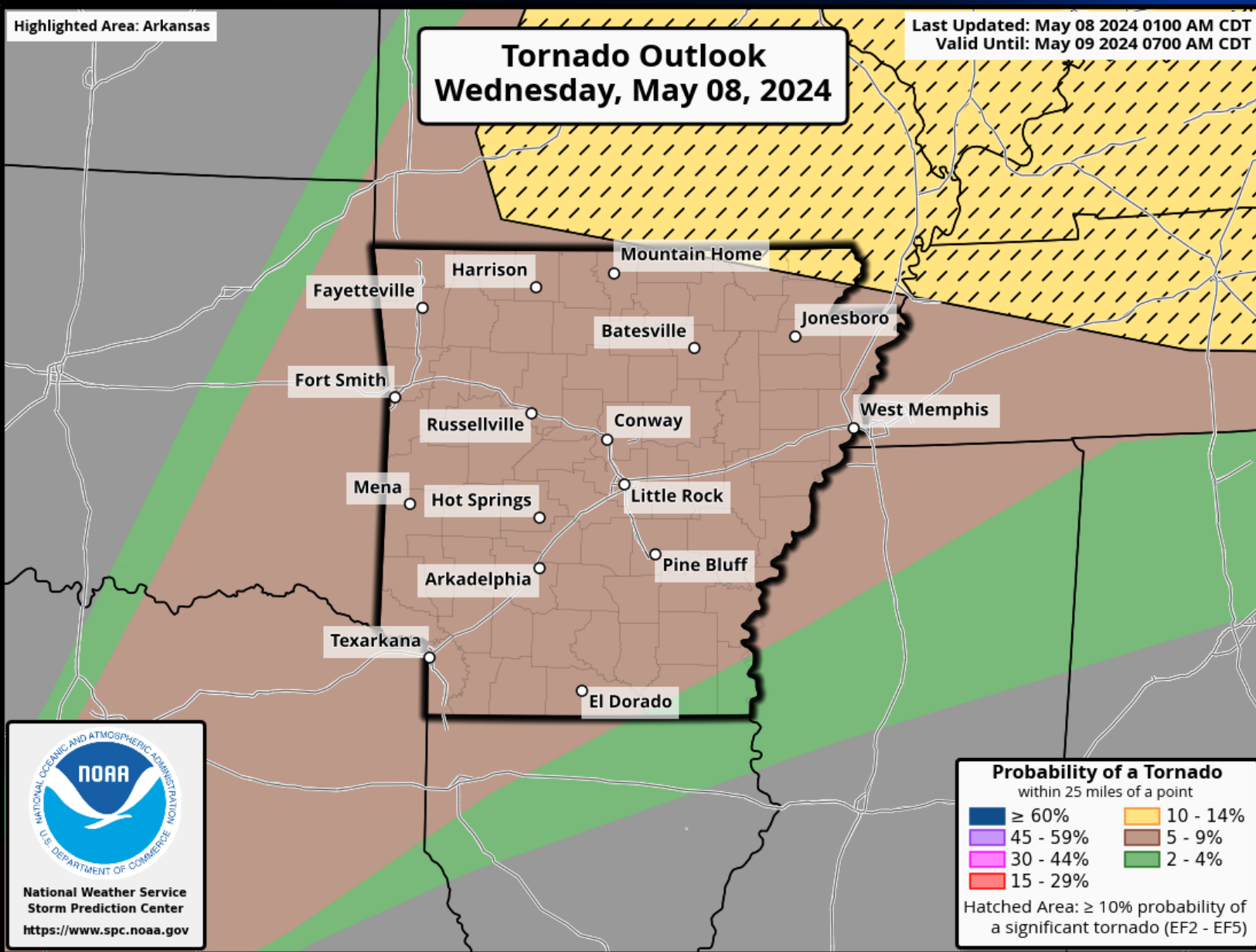
# Severe Weather by Hazard: Severe Hail (May 8, 2024)



**Very large hail will be possible, especially as the storms first develop. Hatched areas could see hail in excess of 2" in diameter.**



# Severe Weather by Hazard: Tornado (May 8, 2024)

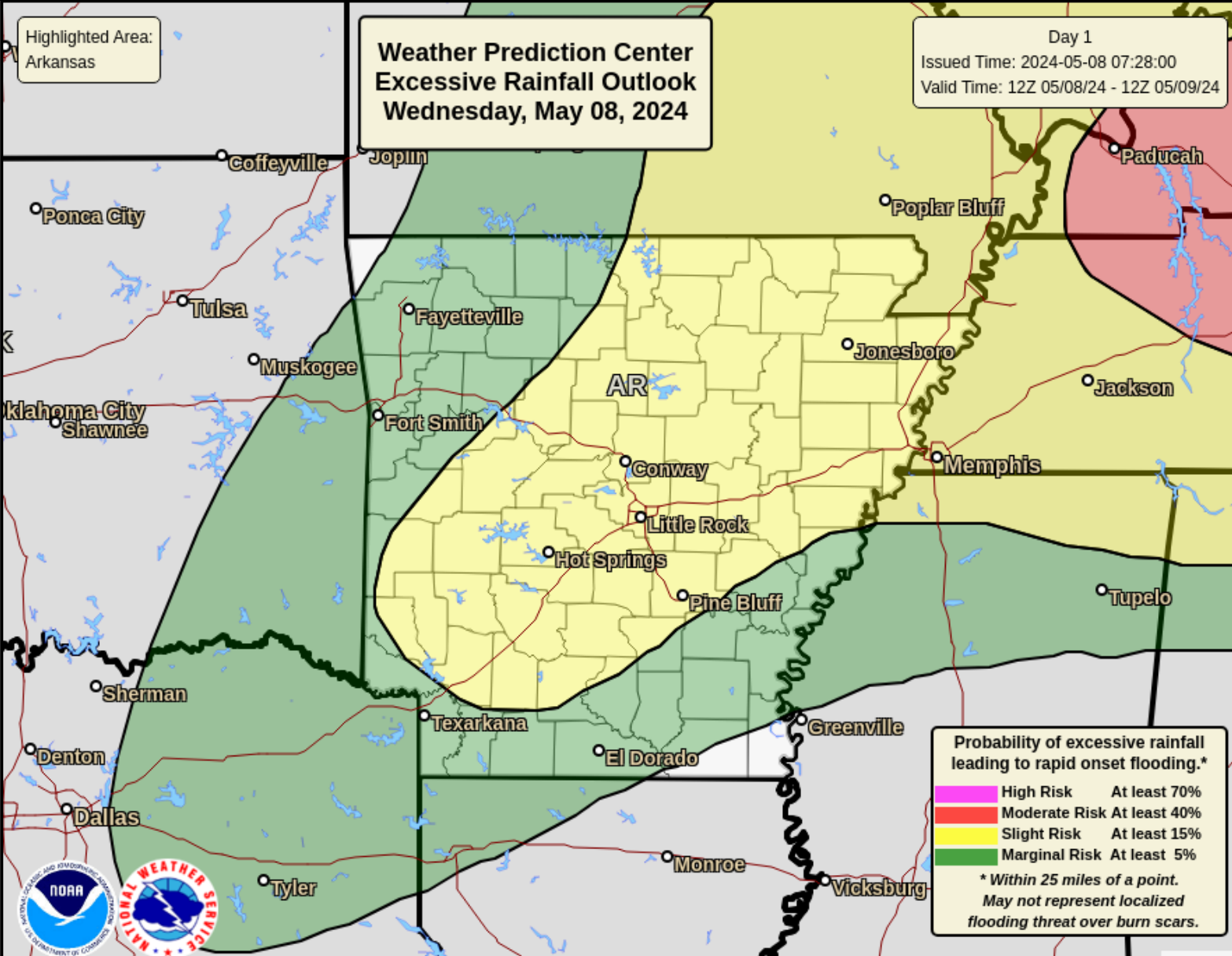


While the threat for tornadoes will be higher to the N/NE of Arkansas, storms will be capable of producing at least a few tornadoes through the event.

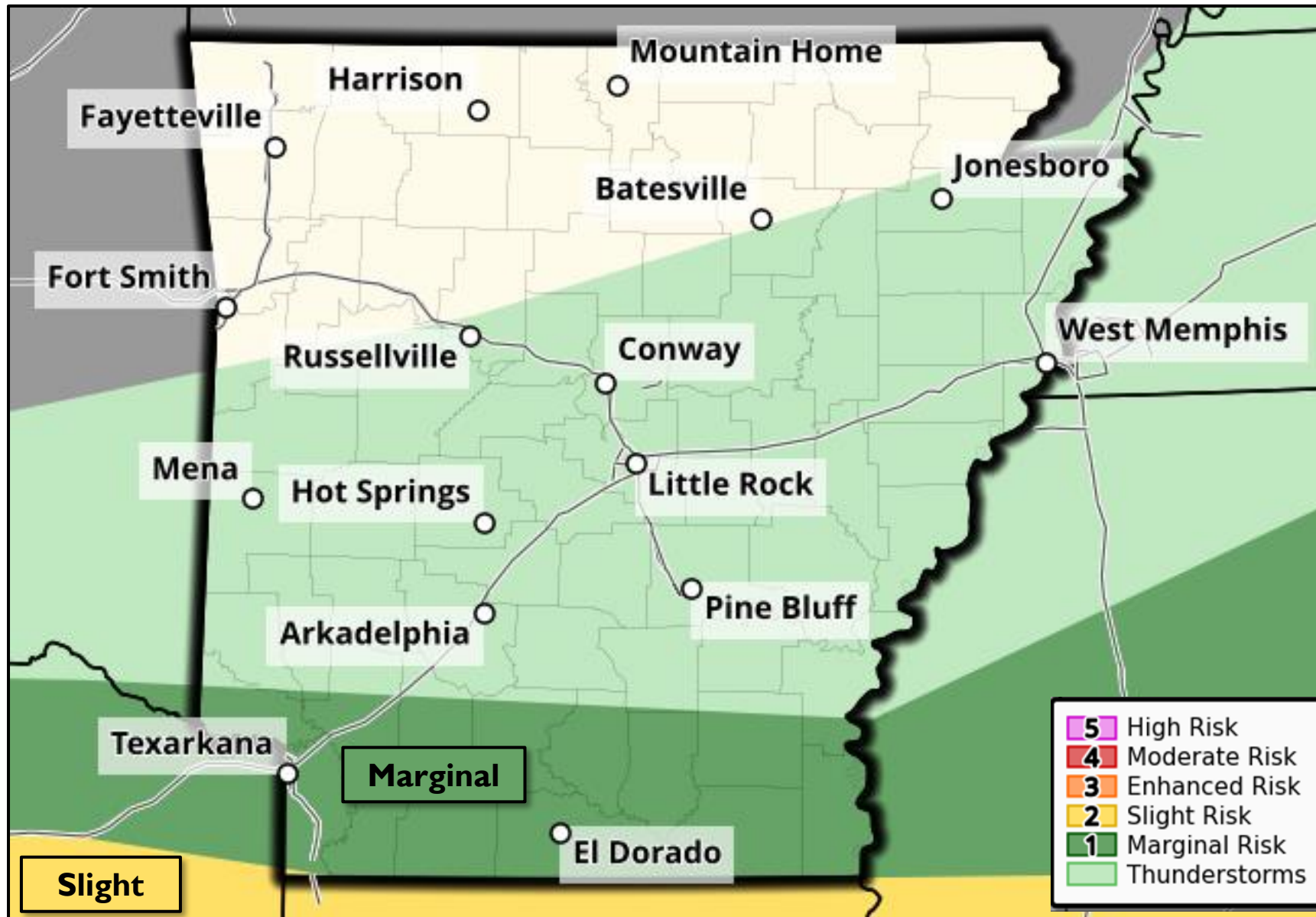




# Severe Weather by Hazard: Heavy Rain (May 8, 2024)



While widespread heavy rainfall is not expected (1-2"), rain accumulation will be quick and intense with stronger storms.



### Tornado Potential

- High
- Medium
- Low
- Very Low**

### Maximum Hail Size

- Up to Softball
- Up to Baseball
- Up to Golf ball
- Up to Quarter**

### Maximum Wind Speed

- 80+ mph
- 60 to 80 mph
- Up to 60 mph**



# For the latest information



**Web:** <http://weather.gov/LZK>



**Phone:** (501) 834-0308



**E-mail:** [sr-lzk.forecasters@noaa.gov](mailto:sr-lzk.forecasters@noaa.gov)



**Facebook:** NWSLittleRock



**Twitter:** @NWSLittleRock



**YouTube:** NWSLittleRock