



Severe Weather Briefing

**National Weather Service
Little Rock, Arkansas**

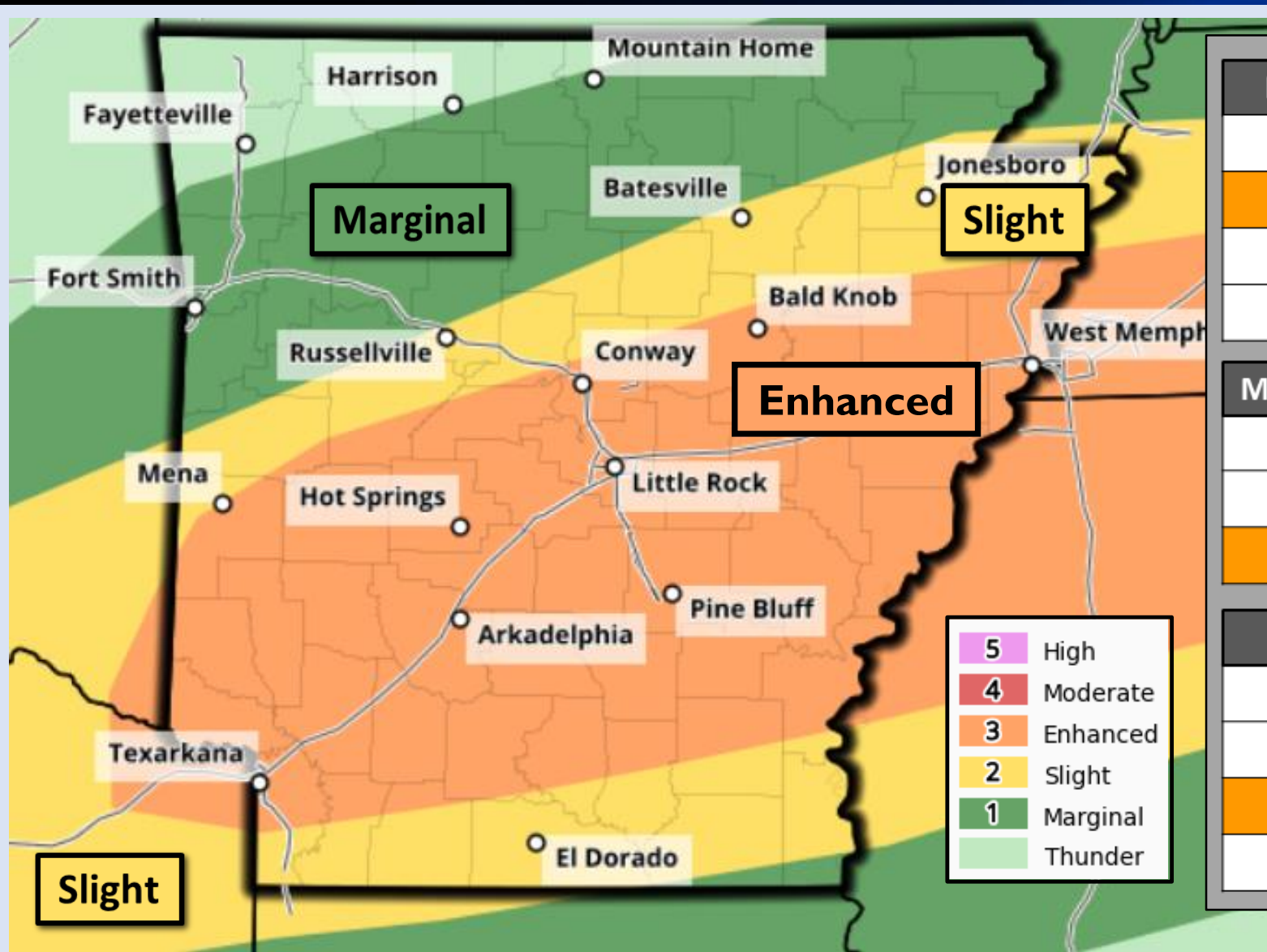
March 1, 2023 - 3:00 PM



Updates and Key Points with this briefing:

- ✓ **Severe storms are possible Wednesday afternoon and evening, Storm Prediction Center has increased much of central and southern Arkansas into an Enhanced Risk (3/5).**
 - ✓ **A Moderate Risk (4/5) of severe weather continues for southwestern Arkansas Thursday and Thursday night — *Severe weather outbreak appears likely over the southern half of Arkansas.***
 - ✓ **Flood potential continues to increase over portions of the area today and Thursday – Flood Watch takes effect today. Flood watch has also been expanded south.**
- A very active pattern will begin across Arkansas, including the threat for severe weather and isolated flash flooding this afternoon and evening.
 - The storm system on Thursday continues to pose a significant threat to the southern half of the state, with tornadoes (including a few strong to violent tornadoes), widespread damaging wind, and large hail all possible. Given the volatile forecast environment, some tornadoes could be long-track. More isolated instances of severe weather will still be possible over northern Arkansas.
 - In addition to severe weather, several inches of rain are likely Wednesday through Thursday night. With the ground saturated in many areas, flash flooding is expected. Ongoing river flooding (especially in the White River Basin) will worsen with new river flooding possible in other basins.

Severe Weather Wednesday (March 1st)



Maximum Hail Size
Up to Softball
Up to Baseball
Up to Golf ball
Up to Quarter

Maximum Wind Speed
80+ mph
60-80 mph
Up to 60 mph

Tornado Potential
High
Medium
Low
Very Low

Strong to severe thunderstorms are expected to develop this afternoon and evening across central and southern Arkansas.

The primary severe hazards through this afternoon and evening will be large hail, strong to damaging winds, and possibly a few tornadoes.

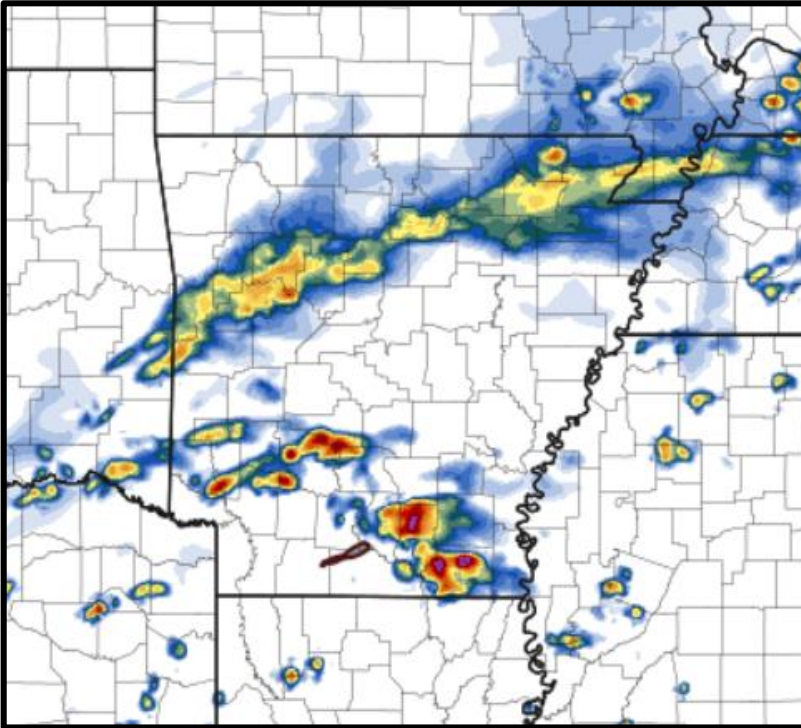
This is just a precursor to the main severe weather event on Thursday.

Precipitation Timing Today (March 1st)

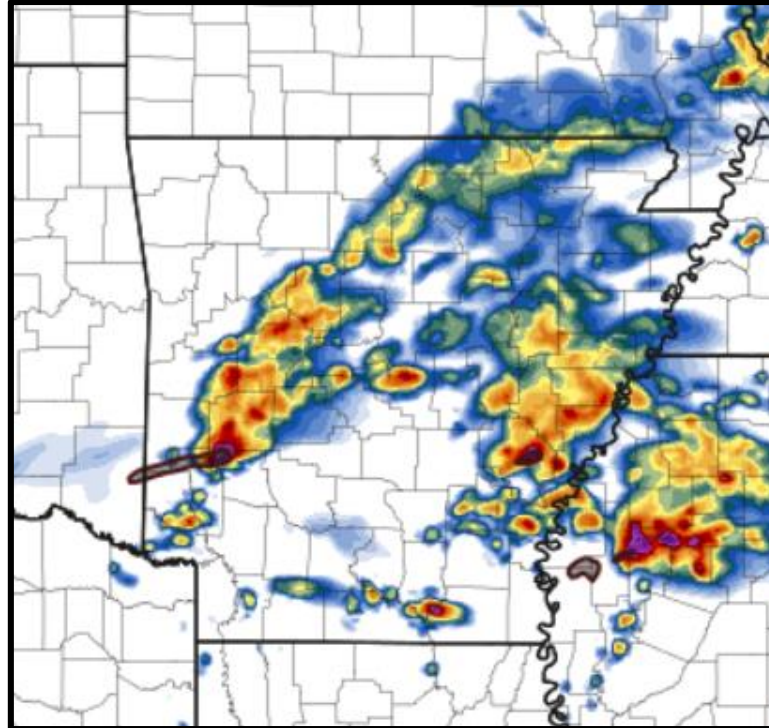
Weather Forecast Office
Little Rock, AR



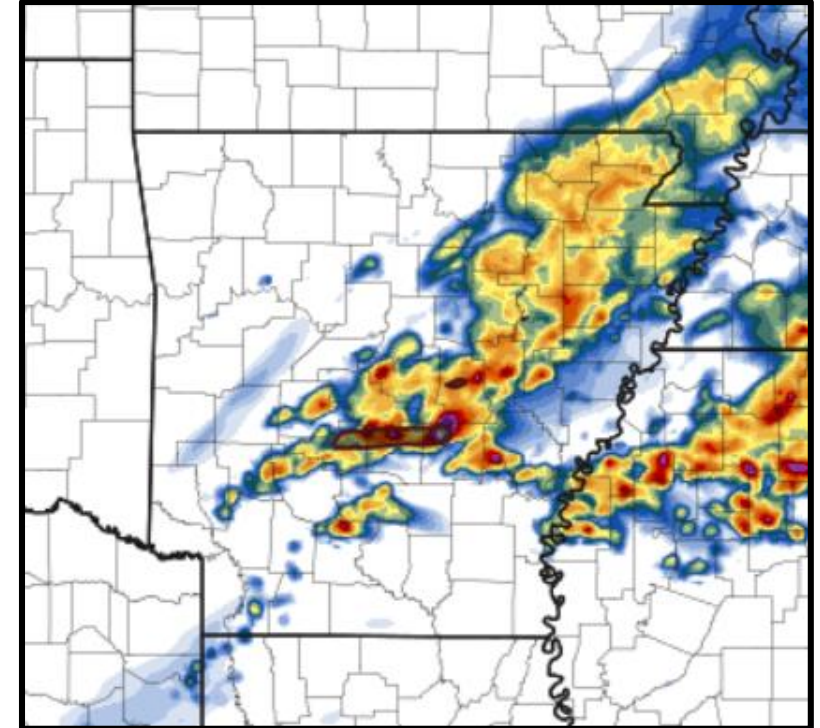
5 PM Wednesday



7 PM Wednesday



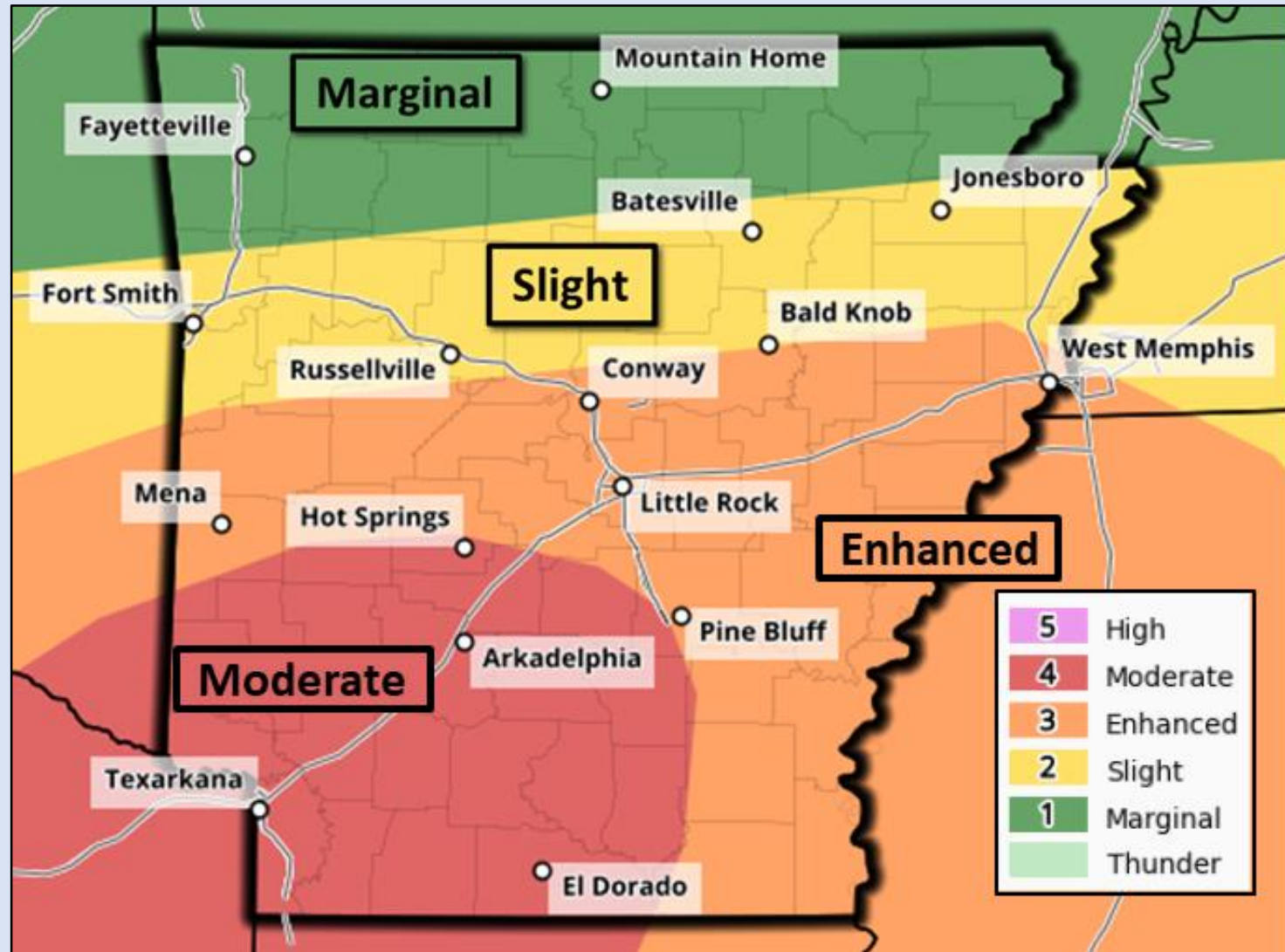
9 PM Wednesday



Showers and storms are expected to become scattered to more widespread as we move into the evening hours. Best severe chances appears to be for southern and central Arkansas. Large hail and damaging winds are primary concerns with this round, but a few tornadoes cannot be ruled out. Showers and thunderstorms are expected to come to an end around midnight tonight.

Images courtesy Pivotal Weather

Severe Weather Thursday (March 2nd)



Maximum Hail Size
Up to Softball
Up to Baseball
Up to Golf ball
Up to Quarter
Maximum Wind Speed
80+ mph
60-80 mph
Up to 60 mph
Tornado Potential
High
Medium
Low
Very Low

A concerning amount of instability and wind energy will fuel more numerous severe storms on Thursday and Thursday night.

A regional outbreak of severe weather now appears likely!

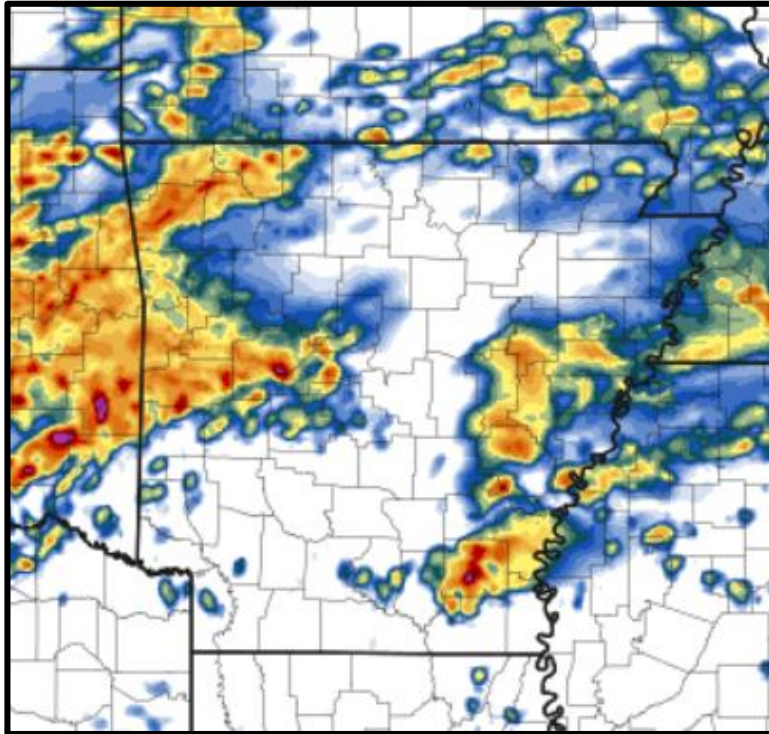
Strong to violent tornadoes will be possible across the Moderate risk area. Widespread damaging winds and large hail are also expected.

Precipitation Timing Today (March 2nd)

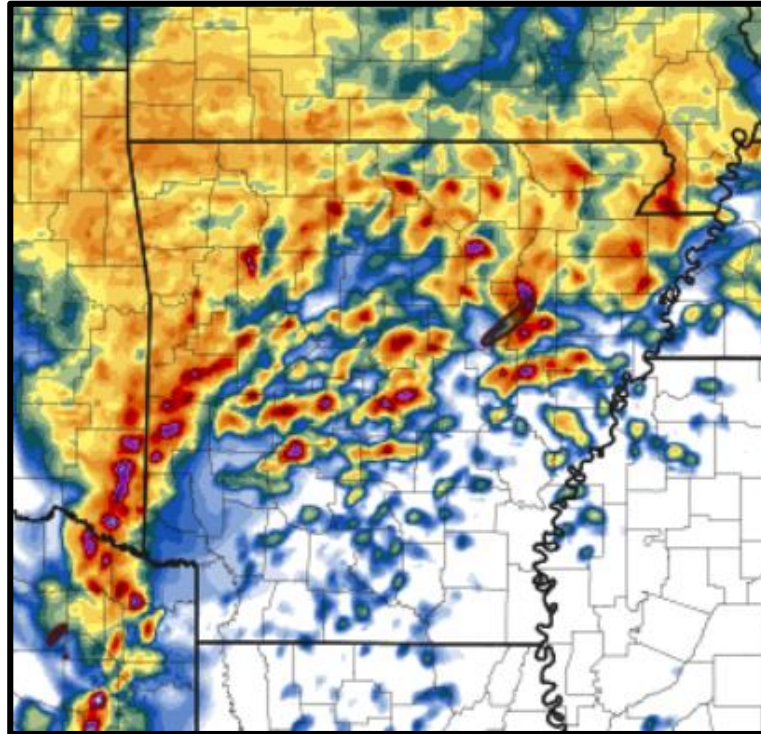
Weather Forecast Office
Little Rock, AR



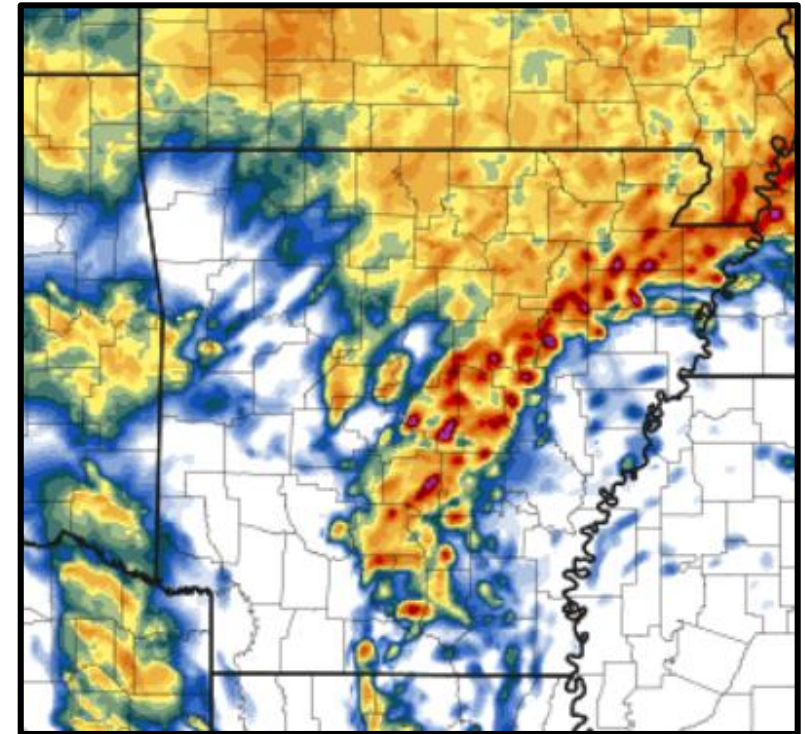
7 PM Thursday



10 PM Thursday



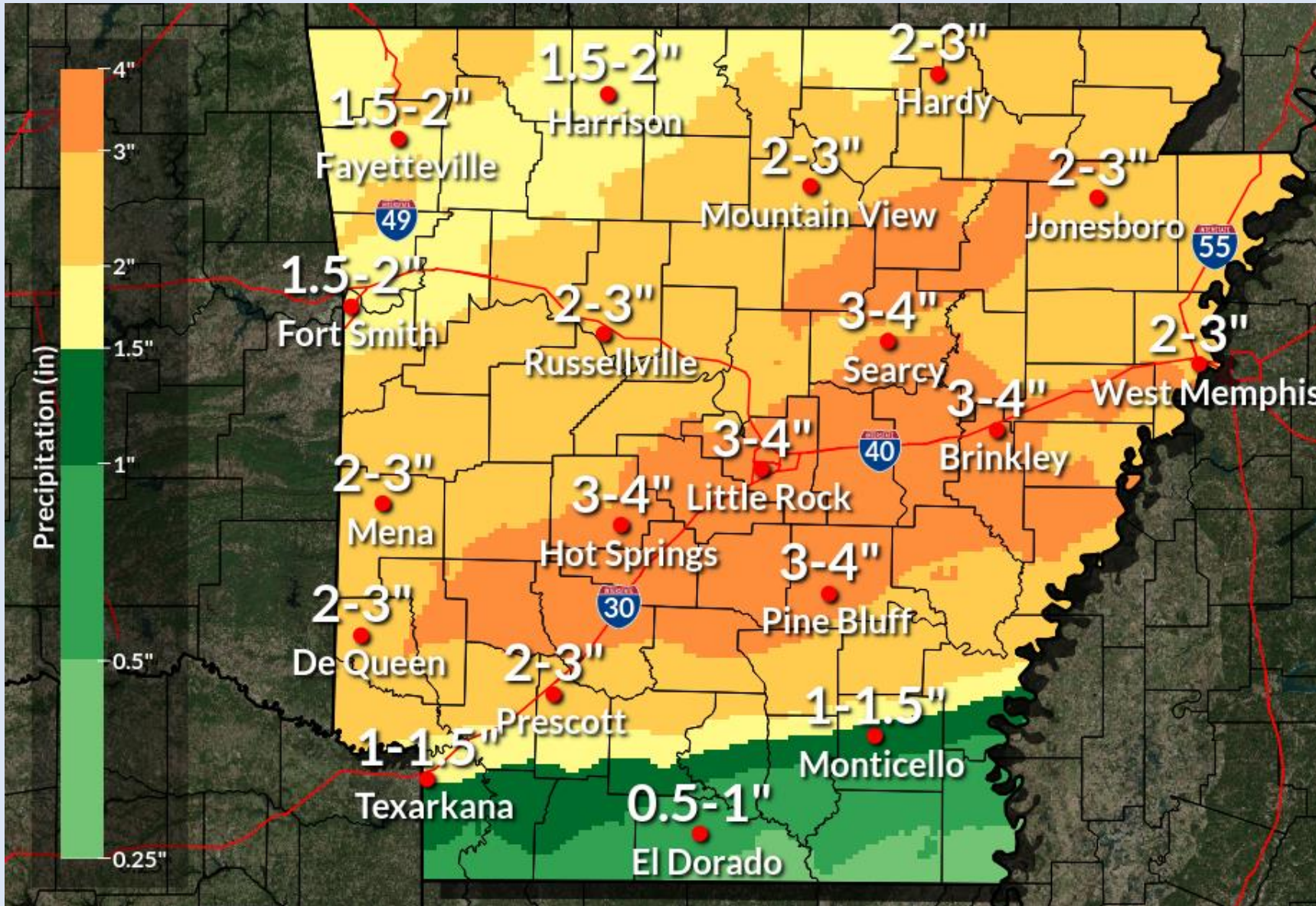
1 AM Friday



While there are expected to be some scattered showers and thunderstorms Thursday morning and afternoon, most severe weather is expected during the evening hours on Thursday into early Friday morning. Large hail, damaging winds, and tornadoes are expected with this round of storms.

Images courtesy Pivotal Weather

Possible Rainfall through Thursday night



Several inches of rainfall is expected to fall between Wednesday and Thursday night, and locally greater amounts remain possible as well.

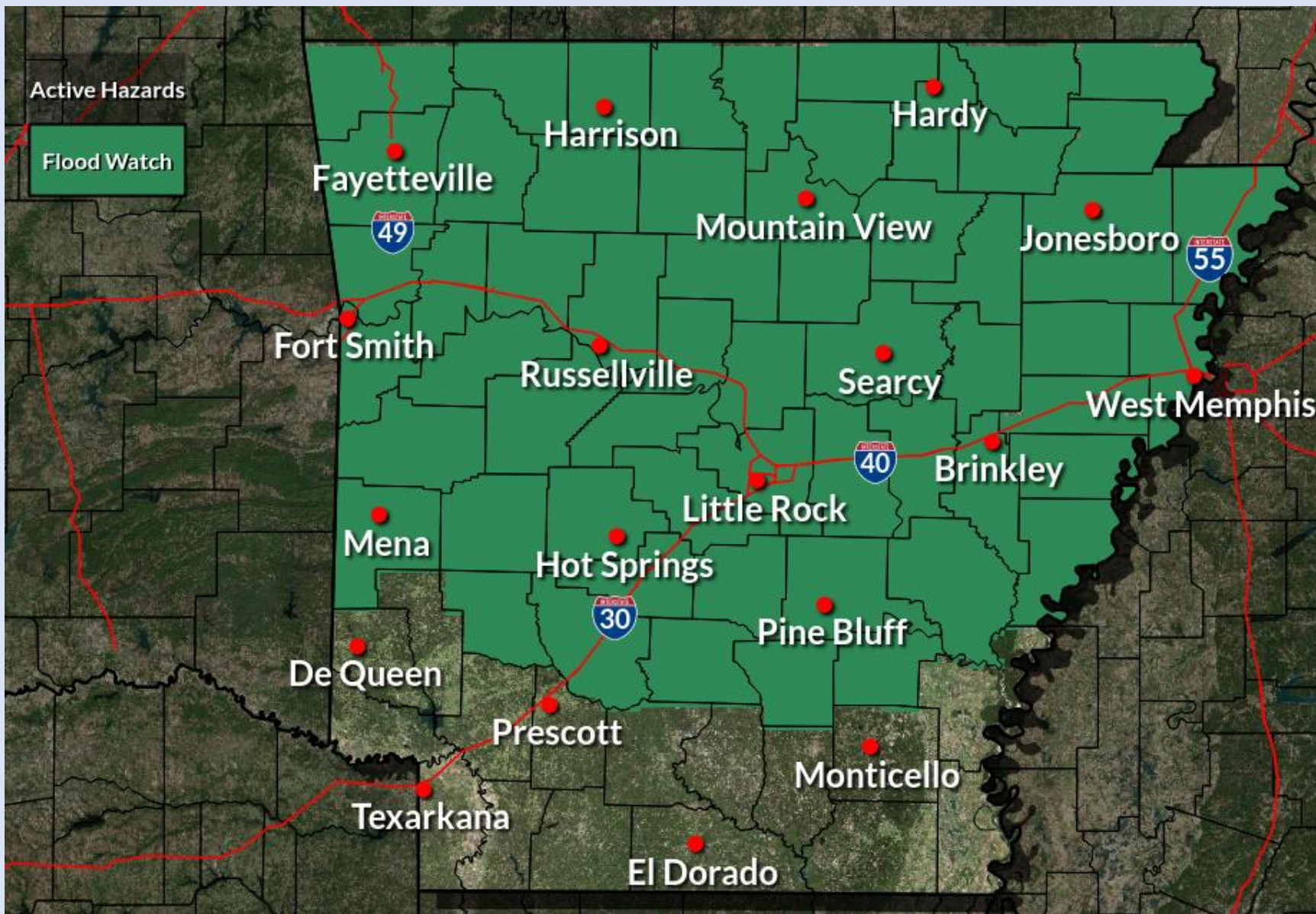
Flash flooding is likely given very wet and saturated soils across the area, especially over central and into eastern/northeastern portions of Arkansas.

Ongoing flooding of river basins, including portions of the White River, will likely be further exacerbated by forecast rainfall, and additional basins could see an increase in water levels.

Flood Watch in Effect Today

Periods of widespread heavy rain are expected through Thursday Night.

Weather Forecast Office
Little Rock, AR

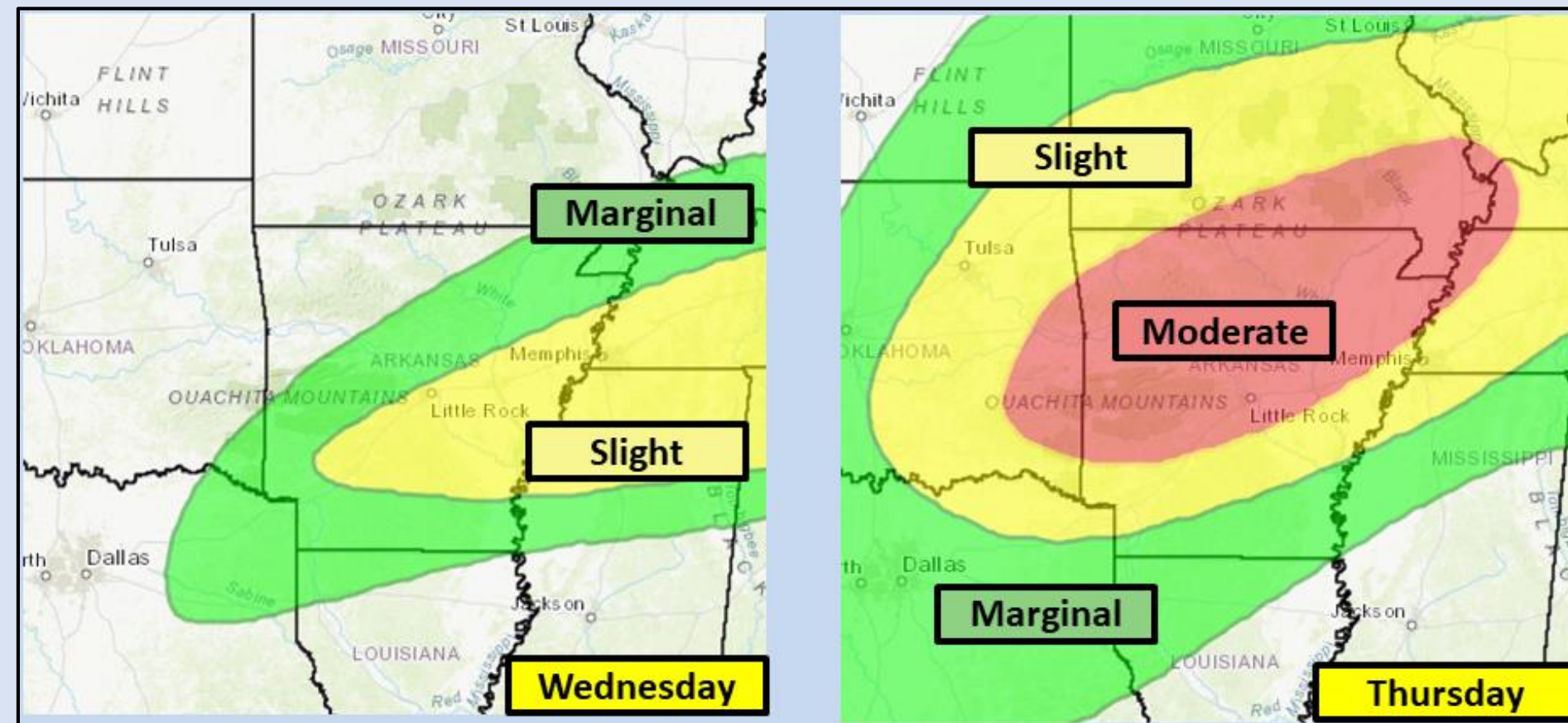


A few rounds of heavy rainfall from scattered to widespread storms are expected today and tomorrow.

Widespread heavy rainfall and antecedent saturated soil surfaces will pose an elevated threat for flash flooding across most of the northern half of the state over the next few days.

A Flood Watch will take effect this afternoon, and continue through Friday morning.

Excessive Rain Outlook



Locally heavy rainfall will be possible with severe weather later this afternoon, resulting in an increased flash flood threat for portions of central and eastern Arkansas.

Thursday, additional heavy rainfall with another round of severe weather has prompted the issuance of a Moderate Risk for excessive rainfall and flash flooding over much of western, central, and northeastern Arkansas for Thursday.

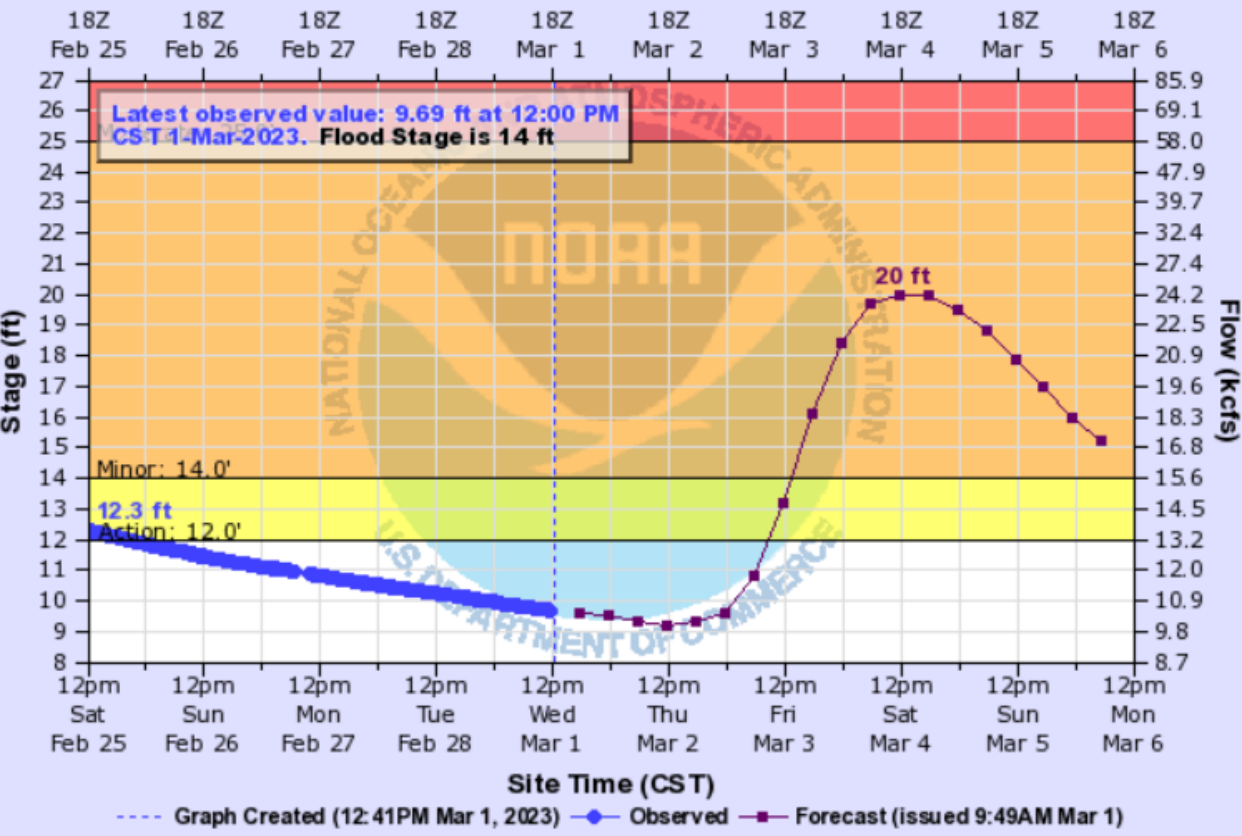
It will not take much additional rainfall to generate excessive runoff and cause flash flooding!

River Flooding Concerns



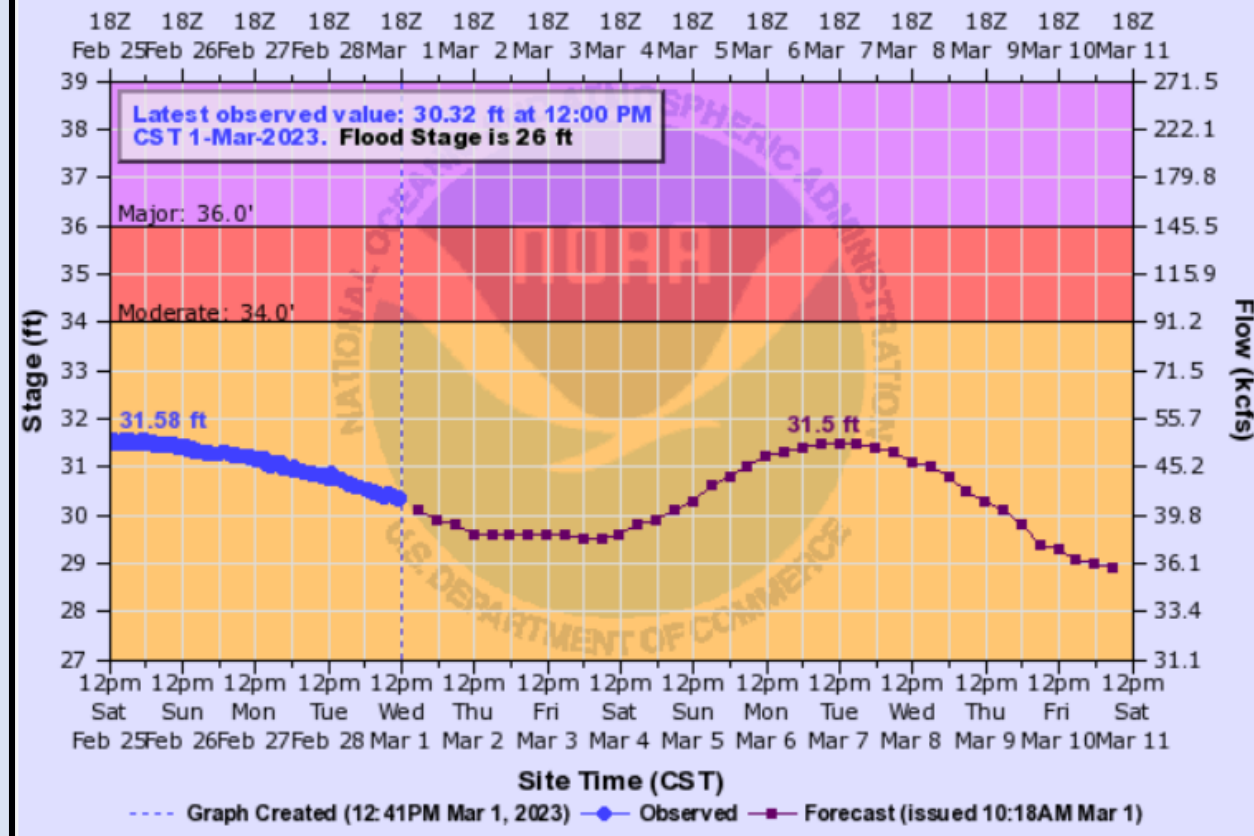
BLACK RIVER AT BLACK ROCK

Universal Time (UTC)



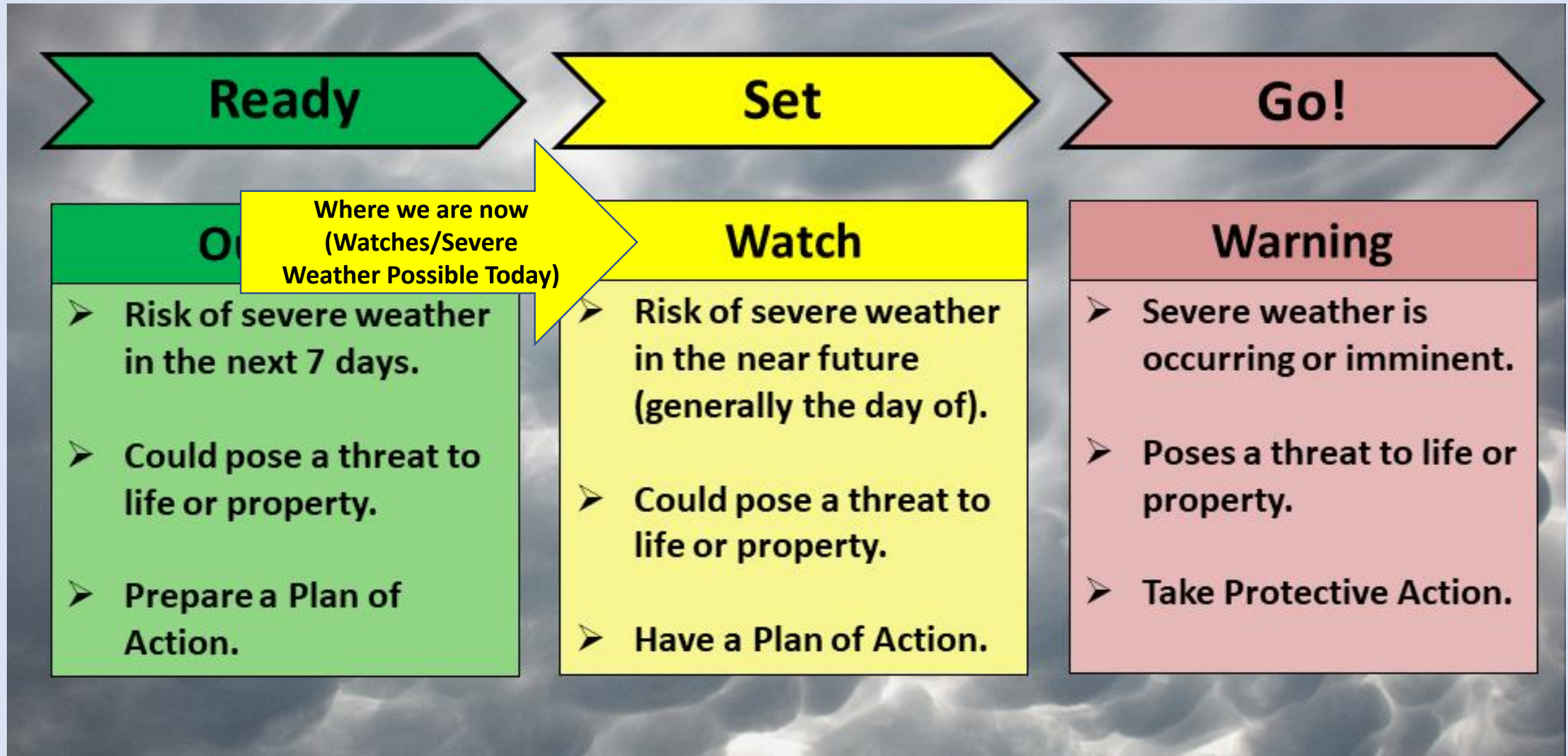
WHITE RIVER NEAR AUGUSTA

Universal Time (UTC)



River flooding is expected to be another main concern with these two rounds of rain. Water will begin to drain into river basins with crests likely occurring the weekend into early next week.

There is one caveat to note with current crest forecasts for rivers. RFC is using 36-hour rainfall totals currently...then 24-hour totals tomorrow. This would keep crests a little more conservative in areas we are less confident.





For the latest information



Web: <http://weather.gov/LZK>



Phone: (501) 834-0308



E-mail: sr-lzk.forecasters@noaa.gov



Facebook: NWSLittleRock



Twitter: @NWSLittleRock



YouTube: NWSLittleRock